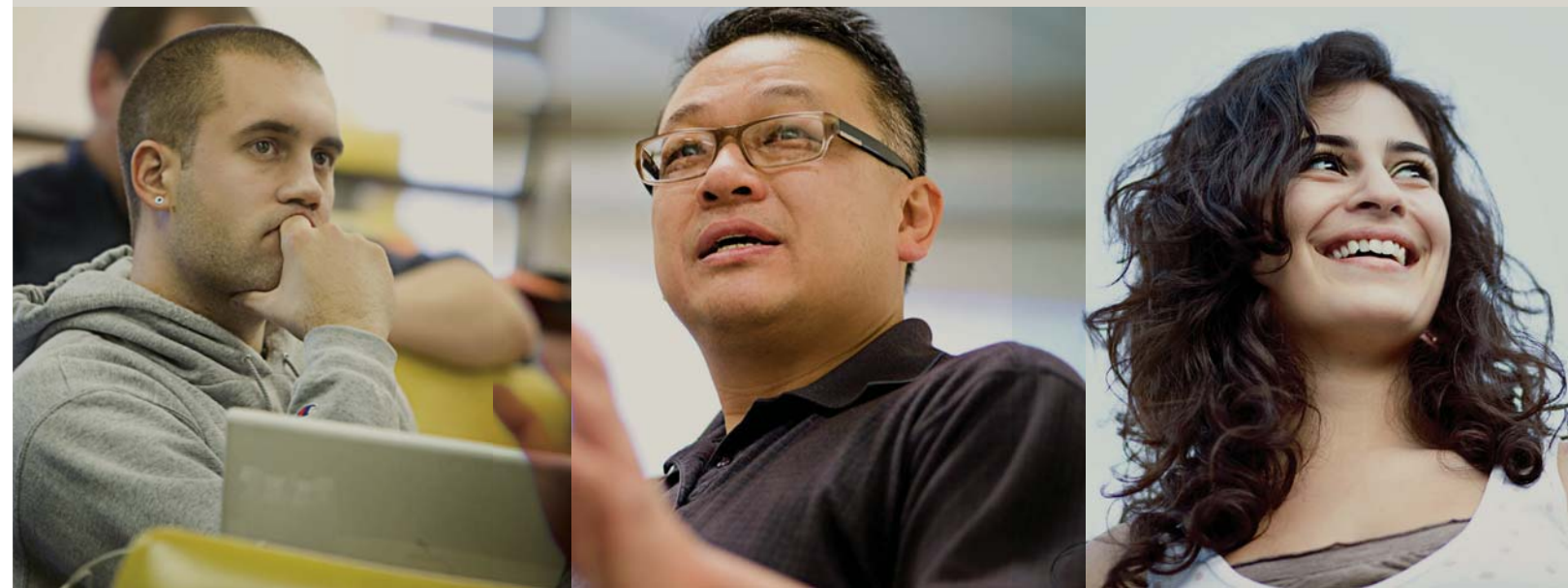




WESTERN SEMINARY



2009-2010
Academic Catalog
Master of Arts in Specialized Ministry
Degree Program

PORTLAND CAMPUS

Master of Arts (M.A.) in Specialized Ministry Program

PROGRAM OBJECTIVES

Western Seminary offers the Master of Arts (M.A.) in Specialized Ministry degree for students seeking specialized graduate theological education. The Specialized Ministry program is designed for students pursuing ministry vocation in an area of focused ministry. For example, they may serve as associate pastors on a church staff or in parachurch agencies where their ministry will be as a specialist in a particular area. The program is not recommended for those preparing for a ministry where ordination is expected or required (e.g., the pastorate) or for those who anticipate subsequent doctor of ministry studies.

Students will take a common sequence of courses to build the core outcomes in spiritual formation, biblical and theological studies, and ministry studies. As students proceed with their classroom studies, they will be challenged to put what they learn into action through mentored field ministry. The interaction between student, faculty advisor and ministry mentor will facilitate the refining of ministry effectiveness by identifying areas of strength to be honed and areas of critical weakness to be improved.

M.A. IN SPECIALIZED MINISTRY CORE OUTCOMES

In addition to the Seminary's general educational goals, the M.A. in Specialized Ministry program attempts to achieve specific outcomes:

1. Be a person whose Christ-like character and dependence upon the Holy Spirit are worthy of being emulated, and whose integrity imparts credibility to his/her ministry.
2. Be a person who understands his/her role in the furthering of God's purposes.
3. Be a person who experiences interdependency with other believers.
4. Be a person with a global vision who thinks, acts and prays strategically.
5. Be able to implement a biblically-based philosophy of ministry.
6. Be able to interpret and apply biblical texts using sound hermeneutical principles.
7. Know the major themes and developments of God's redemptive activity revealed in Scripture.
8. Know the historical tenets and contemporary significance of evangelical theology and practice.
9. Be able to think biblically and critically so that various truth claims can be effectively evaluated.
10. Be able to communicate God's truth clearly, accurately, and convincingly.
11. Be able to lead and equip a group of people so that God's purposes are efficiently accomplished in and through them.
12. Be a true life-long learner, building upon his/her seminary training.

ADMISSION REQUIREMENTS

In addition to the general requirements for admission to the Seminary given on pages 18-19, applicants for the M.A. program are expected to present an accredited baccalaureate degree (or its equivalent) with a cumulative grade point average of 3.0 or higher (on a 4.0 scale), including a

breadth of liberal arts. Applicants who do not meet these general academic requirements may petition the Admissions Committee for consideration. A recommendation from the applicant's pastor and three personal recommendations regarding the applicant's Christian character and leadership potential also are required.

DEGREE REQUIREMENTS

The M.A. in Specialized Ministry degree is conferred upon the attainment of certain personal and academic requirements. In addition to the general seminary requirements outlined on pages 31-32, degree candidates must (1) give evidence of a genuine Christian character, orthodox belief, and conduct consistent with a God-given call to a position of leadership; (2) complete all courses in the prescribed Specialized Ministry curriculum with a minimum cumulative grade point average of 2.5, and 3.0 grade point average within ministerial studies (core and specialization). By careful planning, students may complete their studies in four semesters.

MINISTRY SPECIALIZATION OPTIONS

To prepare for their particular ministry area, students will choose one area of ministry specialization. In consultation with their advisor, they will choose eight hours of course work in this area of ministry emphasis. The courses will be chosen in order to build on their previous education and experience and allow them to prepare for excellence in ministry in that specific area. Current specializations include Chaplaincy, Jewish Studies, Coaching, Evangelism and Equipping, Pastoral Care to Women, Youth Ministry, and Youth & Family Ministry. Other areas of potential specialization (e.g., worship, church planting, etc.) may be formulated by academic petition, contingent upon the availability of appropriate courses to support adequately that specialization.

IN-MINISTRY SCHEDULE OPTION

Western Seminary offers the in-ministry schedule option for the Specialized Ministry degree. This track is designed to make fulfilling the 30 credit residential requirements for an accredited master's degree more accessible for students significantly involved in ministry roles. Three or four weeks per year, two 2-credit courses will be offered in intensive formats (each spanning 2 ½ days), enabling students to complete the "class time" requirements for up to four credits in one week. Pre- and post-residential homework assignments will be designed for maximum integration into one's current ministry responsibilities. The remainder of the program's course work can either be completed through distance education or normal residential courses. Eligibility for this track will ordinarily require being at least half-time in paid ministry for the prior year (and maintaining at least this level of involvement for the duration of the program) and receiving the endorsement of one's ministry supervisor. This is a limited-enrollment program and will require making consistent annual progress towards degree completion. For more information, please contact the Admissions Office.



Master of Arts in Specialized Ministry Core

44 CREDITS

Spiritual Formation [6] **Ministerial Studies [4]**
Biblical Studies [16] **Ministerial Electives [8]**
Theological Studies [10]

(specializations below)

CHAPLAINCY TRACK

Specialization Electives [8]
Mentored Field Ministry [6]
Open Electives [2]

(see this page for detail)

COACHING TRACK

Specialization Electives [8]
Mentored Field Ministry [6]
Open Electives [2]

(see page 45 for detail)

EVANGELISM AND EQUIPPING TRACK

Specialization Electives [8]
Mentored Field Ministry [6]
Open Electives [2]

(see page 46 for detail)

JEWISH STUDIES TRACK

Specialization Electives [8]
Mentored Field Ministry [6]
Open Electives [2]

(see page 47 for detail)

PASTORAL CARE TO WOMEN TRACK

Specialization Electives [8]
Mentored Field Ministry [6]
Open Electives [2]

(see page 47 for detail)

YOUTH MINISTRY TRACK

Specialization Electives [8]
Mentored Field Ministry [6]
Open Electives [2]

(see page 50 for detail)

YOUTH AND FAMILY MINISTRY TRACK

Specialization Electives [8]
Mentored Field Ministry [6]
Open Electives [2]

(see page 51 for detail)

**DEGREE TOTAL
= 60 CREDITS**

CHAPLAINCY TRACK

The Chaplaincy track is designed to provide specialized preparation for those who are called to serve in an organization or context separate from the traditional ministries of the local church. These organizations include military, hospital, law enforcement, nursing home, and other such institutions. The program seeks to integrate the classic disciplines of biblical and theological reflection with the pastoral skills of counseling, preaching and member care so vital for effective chaplaincy ministry. Students are encouraged to participate in multiple semesters of direct chaplaincy experience under the supervision of an experienced chaplain mentor. By arrangement students may participate in Clinical Pastoral Education (CPE) as part of their mentored field ministry.

In addition to the M.A. in Specialized Ministry core outcomes, the Chaplaincy track attempts to achieve specific outcomes:

1. Be able to implement a biblically-based and contextually appropriate philosophy of ministry to a specific chaplaincy context.
2. Be able to relate the Christian message persuasively and ethically to the lives of persons under your care.
3. Be able to counsel those who are suffering so they find comfort and spiritual strength.
4. Be able to disciple and equip others in the process of spiritual growth.



The program requires a minimum of 60 credit hours:

Spiritual formation studies: 6 credits

- SFS 501 Learning to Love God and Others(2)
- SFS 502 Practicing Prayer and Other Key Disciplines(2)
- SFS 504 Growing into Ethical Maturity(2)

Biblical interpretation studies: 16 credits

- DBS 506 Learning to Interpret Scripture(4)
- BLS 501 Interpreting Genesis to Song of Solomon(4)
- BLS 502 Interpreting the Prophets to Gospels(4)
- BLS 503 Interpreting Acts to Revelation(4)

Theological studies: 10 credits

- THS 501 Knowing the Triune God: Theology I(4)
- THS 502 Glorifying the God of our Salvation: Theology II(4)
- THS 503 Living as the Community of the Spirit: Theology III(2)

Ministerial studies: 12 credits

Required—4 credits:

- DMS 501 Thinking Theologically about Ministry.....(2)
- DMS 506 Developing Godly Leadership for the 21st Century.....(2)

Restricted electives—Select 8 credits from among the following:

- DIS 501 Communicating Christ in Culture.....(2)
- DMS 502 Introducing Theology and Practice of Worship(2)
- EMS 505 Growing Disciples Intentionally(2)
- PTS 503 Practicing Evangelism and Apologetics(2)
- PTS 504 Maximizing the Church's Redemptive Influence(2)
- PTS 507 Providing Pastoral Counseling.....(2)
- PTS 508 Developing Strong Families(2)
- PTS 510 Preparing and Preaching Expository Sermons(2)

Mentored Ministry: 6 credits

- MFM 500 Discovering/Developing Your Ministry Potential(2)
 - MFM 501-504 Mentored Field Ministry(1+1+1+1)
 - or ICS 530 Chaplaincy Practicum(4)
- (see program advisor for MFM/practicum details)

Specialization track: 8 credits

Select 8 credits from the courses below, or related electives with advisor approval:

- CNS 503 Family Systems(3)
- CNS 512 Group Counseling(3)
- ICS 501 The Chaplaincy.....(2)
- ICS 505 Hospital Chaplaincy(2)
- ICS 506 Military Chaplaincy.....(2)
- PTS 503 Practicing Evangelism and Apologetics(2)
- PTS 506 Pastoral Duties(2)
- PTS 507 Pastoral Counseling.....(2)
- PTS 515X Advanced Expository Preaching I.....(2)
- PTS 515Y Advanced Expository Preaching II(2)

Open electives: 2 credits

Total: 60 credits

COACHING TRACK

The Coaching track is designed to provide specialized training in utilizing the skills of coaching in helping both people and teams experience positive change and accomplish to a greater extent their goals. This ministry skill is important for those wanting a new discipleship/mentoring/leadership model for assisting others towards desired transformation. Special focus is given to developing change strategies and action steps. This track will provide a skill set that will be a strong foundation to ministering in both Christian and secular contexts.

In addition to the M.A. in Specialized Ministry core outcomes, the Coaching track attempts to achieve specific outcomes:

1. Be able to articulate a biblical model and rationale for coaching.
2. Be able to coach individuals and teams in accomplishment of their goals.
3. Be able to develop and implement a coaching ministry within a church, parachurch or secular context.

The program requires a minimum of 60 credit hours:

Spiritual formation studies: 6 credits

- SFS 501 Learning to Love God and Others(2)
- SFS 502 Practicing Prayer and Other Key Disciplines(2)
- SFS 504 Growing into Ethical Maturity(2)

Biblical interpretation studies: 16 credits

- DBS 506 Learning to Interpret Scripture(4)
- BLS 501 Interpreting Genesis to Song of Solomon(4)
- BLS 502 Interpreting the Prophets to Gospels(4)
- BLS 503 Interpreting Acts to Revelation(4)

Theological studies: 10 credits

- THS 501 Knowing the Triune God: Theology I(4)
- THS 502 Glorifying the God of our Salvation: Theology II(4)
- THS 503 Living as the Community of the Spirit: Theology III(2)

Ministerial studies: 12 credits

Required—4 credits:

- DMS 501 Thinking Theologically about Ministry.....(2)
- DMS 506 Developing Godly Leadership for the 21st Century.....(2)

Restricted electives—Select 8 credits from among the following:

- DIS 501 Communicating Christ in Culture.....(2)
- DMS 502 Introducing Theology and Practice of Worship(2)
- EMS 505 Growing Disciples Intentionally(2)
- PTS 503 Practicing Evangelism and Apologetics(2)
- PTS 504 Maximizing the Church's Redemptive Influence(2)
- PTS 508 Developing Strong Families(2)
- PTS 510 Preparing and Preaching Expository Sermons(2)

Mentored Ministry: 6 credits

- MFM 500 Discovering/Developing Your Ministry Potential(2)
- MCS 531 Coaching Practicum I.....(1)
- MCS 532 Coaching Practicum II.....(1)
- MCS 533 Coaching Practicum III(1)
- MCS 534 Coaching Practicum IV(1)

(see program advisor for MFM/coaching/practicum details)



Master of Arts in Specialized Ministry Program, continued

Specialization studies: 8 credits

Required:

MCS 510	Introduction to Coaching.....	(1)
<i>Select at least seven additional credits from the restricted electives below, with advisor approval. (At least two of these credits must be MCS-prefixed courses.)</i>		
MCS 511	Coaching for Change	(1)
MCS 512	Life and Personal Coaching.....	(1)
MCS 513	Coaching Approach to Leading and Managing	(1)
MCS 514	Coaching in Congregations for Spiritual Development	(1)
MCS 519	Coaching Supervision.....	(1)
MCS 562	Coaching Seminar	(1)
PTS 505	Providing Pastoral Leadership	(2)
SFS 515	Becoming a Spiritual Director	(2)
SFS 543	Readings in Spiritual Classics	(2)
SFS 545	Readings in Contemporary Spirituality	(2)
THS 536	Evaluating Approaches to Sanctification	(2)
THS 561	Equipping for Spiritual Warfare	(2)

Open electives: 2 credits

Total: 60 credits

EVANGELISM AND EQUIPPING TRACK

The Evangelism and Equipping track is designed to provide specialized training in communicating the gospel effectively to non-Christians and in nurturing believers' spiritual growth. Thus it would be a great option for church staff members who wish to focus on outreach and/or discipleship, or for those serving with parachurch ministries similarly committed to fulfilling the Great Commission. The strategic blend of spiritual formation, biblical/theological studies, and mentored practical ministry training provides a strong foundation for fruitful witnessing and edification.

In addition to the M.A. in Specialized Ministry core outcomes, the Evangelism and Equipping track attempts to achieve specific outcomes:

1. Be able to employ ethical approaches to persuasion and motivation in ministry
2. Be able to assist others (both individually and collectively) in the process of spiritual growth
3. Be able to apply a biblically sound and personally relevant method of defending the Christian faith
4. Be able to evaluate biblically various Christian approaches to sanctification

The program requires a minimum of 60 credit hours:

Spiritual formation studies: 6 credits

SFS 501	Learning to Love God and Others	(2)
SFS 502	Practicing Prayer and Other Key Disciplines	(2)
SFS 504	Growing into Ethical Maturity	(2)

Biblical interpretation studies: 16 credits

DBS 506	Learning to Interpret Scripture	(4)
BLS 501	Interpreting Genesis to Song of Solomon	(4)
BLS 502	Interpreting the Prophets to Gospels	(4)
BLS 503	Interpreting Acts to Revelation	(4)

Theological studies: 10 credits

THS 501	Knowing the Triune God: Theology I	(4)
THS 502	Glorifying the God of our Salvation: Theology II	(4)
THS 503	Living as the Community of the Spirit: Theology III	(2)

Ministerial studies: 12 credits

Required—4 credits:

DMS 501	Thinking Theologically about Ministry.....	(2)
DMS 506	Developing Godly Leadership for the 21st Century.....	(2)

Restricted electives—Select 8 credits from among the following:

DIS 501	Communicating Christ in Culture.....	(2)
DMS 502	Introducing Theology and Practice of Worship	(2)
EMS 505	Growing Disciples Intentionally	(2)
PTS 503	Practicing Evangelism and Apologetics	(2)
PTS 504	Maximizing the Church's Redemptive Influence	(2)
PTS 507	Providing Pastoral Counseling	(2)
PTS 508	Developing Strong Families	(2)
PTS 510	Preparing and Preaching Expository Sermons	(2)

Mentored Ministry: 6 credits

MFM 500	Discovering/Developing Your Ministry Potential (2)	
MFM 501-504	Mentored Field Ministry	(1+1+1+1)

(see program advisor for MFM/practicum details)

Specialization track: 8 credits

Select 8 credits from the courses below, or related electives with advisor approval:

DIS 505	Biblical Theology of Mission	(2)
DIS 506	Applied Cultural Analysis.....	(2)
DIS 508	Applied Anthropology	(2)
DIS 522	Starting and Developing Churches	(2)
EMS 546	Advanced Bible Teaching	(2)
FMS 520	Children's Ministry in Family Perspective	(2)
FMS 540	Adult Ministry in Family Perspective.....	(2)
SFS 515	Becoming a Spiritual Director	(2)
SFS 543	Readings in Spiritual Classics	(2)
SFS 545	Readings in Contemporary Spirituality	(2)
THS 536	Evaluating Approaches to Sanctification	(2)

Open electives: 2 credits

Total: 60 credits



JEWISH MINISTRY TRACK

This track provides both foundational and advanced training for those involved in evangelistic and discipleship ministry among Jews. While designed to meet in particular the graduate-level training needs of Jews for Jesus staff, others who share their passion for communicating the gospel of Jesus to Jewish people are welcome to participate in this program. Special consideration is given to engaging the theological, historical and cultural dynamics that shape both the challenges and opportunities associated with contemporary Jewish ministry.

The program requires a minimum of 60 credit hours:

Spiritual formation: 6 credits

SFS 501	Learning to Love God and Others	(2)
SFS 502	Practicing Prayer and Other Key Disciplines	(2)
SFS 504	Growing into Ethical Maturity	(2)

Biblical interpretation studies: 16 credits

DBS 506	Learning to Interpret Scripture	(4)
BLS 501X	Interpreting Old Testament I: Genesis - 2 Samuel.....	(2)
BLS 501Y	Interpreting Old Testament II: 1 Kings - Song of Solomon (2)	
BLS 502X	Interpreting Old Testament III: Isaiah to Malachi.....	(2)
BLS 502Y	Interpreting New Testament I: Gospels	(2)
BLS 503X	Interpreting New Testament II: Epistles 1.....	(2)
BLS 503Y	Interpreting New Testament III: Epistles 2	(2)

Theological studies: 10 credits

THS 501	Knowing the Triune God: Theology I	(4)
THS 502	Glorifying the God of our Salvation: Theology II	(4)
THS 503	Living as the Community of the Spirit: Theology III	(2)

Ministerial studies: 12 credits

Required—4 credits:

DMS 501	Thinking Theologically about Ministry.....	(2)
DMS 506	Developing Godly Leadership 21st Century	(2)

Restricted electives—Select 8 credits from among the following:

DIS 501	Communicating Christ in Culture.....	(2)
DMS 502	Introducing Theology and Practice of Worship	(2)
EMS 505	Growing Disciples Intentionally	(2)
PTS 503	Practicing Evangelism and Apologetics	(2)
PTS 504	Maximizing the Church's Redemptive Influence	(2)
PTS 507	Providing Pastoral Counseling	(2)
PTS 508	Developing Strong Families	(2)
PTS 510	Preparing and Preaching Expository Sermons	(2)

Mentored Ministry: 6 credits

MFM 500	Discovering/Developing Your Ministry Potential	(2)
MFM 501/504	Mentored Field Ministry	(1+1+1+1)

(see program advisor for MFM/practicum details)

Specialization track: 8 credits

Select eight credits from among the following:

JMS 501	Theological Themes in Jewish Ministry	(2)
JMS 502	Jewish History	(2)
JMS 503	History of Jewish Missions	(2)
JMS 504	Jewish Religious Thought	(2)
JMS 509	Practical Issues in Jewish Evangelism	(1)

Open electives: 2 credits

Total: 60 credits

PASTORAL CARE TO WOMEN TRACK

The Pastoral Care to Women track is designed for current and emerging leaders who see their ministry vocation in an area of specialized ministry to women. The student will develop skill in leadership, biblical teaching, ministry design, and shepherding women. This program prepares students to serve in leadership roles in church, parachurch or compassionate ministries to women.

In addition to the M.A. in Specialized Ministry core outcomes, the Pastoral Care to Women track attempts to achieve specific outcomes:

1. Understand the distinctive physiological, psychological, cultural and spiritual aspects of a woman's life and be able to provide biblically based strategies for effective pastoral care to women.
2. Understand many of the issues that cause women emotional pain (e.g. divorce, domestic violence, sexual abuse, etc.) and be able to guide a woman through the reality of the pain towards health, using biblical shepherding principles and referral when necessary.
3. Understand the art of leadership exhibited by biblical, historical and contemporary women and recognize the importance of gender differences. Be able to recruit, mentor and develop strategies as a change agent in leadership.
4. Be able to cast vision, build team, discern needs, and design ministry to meet the needs of women in church, parachurch and community arenas. Understand the scope of building, maintaining and advancing a ministry to women.
5. Be able to communicate God's truth clearly and passionately, by understanding how to develop and present biblical messages, written or spoken.

“Evangelism and edification represent the twin pillars of the church’s mission. Both responsibilities must faithfully be practiced to increase the number of genuine Christ-followers. The Evangelism and Equipping track gives students the advanced tools they need to be significant agents of redemptive life change. It’s exciting to hear how graduates from this concentration have been used by God to lead others to embrace the gospel and its mature in their new life in Christ.”

Dr. Randy Roberts, President & Professor of Spiritual Life Development

The program requires a minimum of 60 credit hours:

Spiritual formation: 6 credits

- SFS 501 Learning to Love God and Others (2)
- SFS 502 Practicing Prayer and Other Key Disciplines (2)
- SFS 504 Growing into Ethical Maturity (2)

Biblical interpretation studies: 16 credits

- DBS 506 Learning to Interpret Scripture (4)
- BLS 501 Interpreting Genesis to Song of Solomon (4)
- BLS 502 Interpreting the Prophets to Gospels (4)
- BLS 503 Interpreting Acts to Revelation (4)

Theological studies: 10 credits

- THS 501 Knowing the Triune God: Theology I (4)
- THS 502 Glorifying the God of our Salvation: Theology II (4)
- THS 503 Living as the Community of the Spirit: Theology III (2)

Ministerial core studies: 12 credits

Required—4 credits:

- DMS 501 Thinking Theologically about Ministry (2)
- DMS 506 Developing Godly Leadership for the 21st Century (2)

or

- PCW 513 Women in Leadership (2)

Restricted electives—Select 8 credits from among the following:

- DIS 501 Communicating Christ in Culture (2)
 - DMS 502 Introducing Theology and Practice of Worship (2)
 - EMS 505 Growing Disciples Intentionally (2)
 - MCS 510 Introduction to Coaching (1)
- Students taking MCS 510 may also take MCS 511, MCS 512, MCS 513 or MCS 514 to complete two credits of coaching.*

- PTS 503 Practicing Evangelism and Apologetics (2)
- PTS 504 Maximizing the Church's Redemptive Influence (2)
- PTS 507 Providing Pastoral Counseling (2)
- PTS 508 Developing Strong Families (2)
- PTS 510 Preparing and Preaching Expository Sermons (2)

or

- PCW515 Develop and Deliver Life-Changing Messages (2)

Mentored Ministry: 6 credits

- MFM 500 Discovering/Developing Your Ministry Potential (2)
 - MFM 501F-504F Mentored Field Ministry (1+1+1+1)
- (see program advisor for MFM/practicum details)

Specialization track: 8 credits

Select 8 credits from the courses below, or related electives with advisor approval:

- PCW 511 Pastoral Understanding of Women (2)
- PCW 512X Women in Pain, Part I (2)
- PCW 512Y Women in Pain, Part 2 (2)
- PCW 513 Women in Leadership (2)
- PCW 514 Building Relational Ministries to Women (2)
- PCW 515 Develop and Deliver Life-Changing Messages (2)
- PCW 521 Develop Life Changing Bible Study Curriculum (1)
- PCW 522 Women and Spiritual Warfare: Championing Women to Stand Firm in the Face of Adversity (2)
- DIS 553 Women in Missions (2)
- THS 572 Integrating a Theology of Women in Ministry (2)

(Note: Students in the PCW track are required to complete at least five PCW specialized courses. These may include the PCW courses listed in the ministry core described above.)

Open electives: 2 credits

Total: 60 credits

YOUTH MINISTRY TRACK

The Youth Ministry track seeks to develop skilled youth ministry practitioners with a solid biblical and theological foundation. Hence, instruction will be provided by youth ministry practitioners familiar with both biblical and field-tested perspectives.

In addition to the M.A. in Specialized Ministry core outcomes, the Youth Ministry track attempts to achieve specific outcomes:

1. Know the biblical/theological/philosophical basis for the strategy of youth ministry that best fits the context of their ministry.
2. Know how to study youth culture and adolescent development and make effective application of that knowledge.
3. Be able to design strategies to effectively reach youth with the Gospel and be an agent of change who contributes to spiritual transformation of youth.
4. Be able to manage a youth ministry in a skilled manner as part of a team.
5. Be able to design strategies to effectively incorporate youth into congregational life.

“Western’s M.A. in Specialized Ministry (Pastoral Care to Women track) is designed to provide in-depth training that is biblical, relevant, and accessible. This program equips students with an awareness and understanding of issues that cause pain and hinder spiritual maturity, creating sensitive leaders and biblical shepherds who integrate understanding with biblical pastoral care principles.”

Dr. Bev Hislop, Associate Professor of Pastoral Care to Women
Executive Director of Women’s Center for Ministry

The program requires a minimum of 60 credit hours:

Spiritual formation: 6 credits

SFS 501	Learning to Love God and Others	(2)
SFS 502	Practicing Prayer and Other Key Disciplines	(2)
SFS 504	Growing into Ethical Maturity	(2)

Biblical interpretation studies: 16 credits

DBS 506	Learning to Interpret Scripture	(4)
BLS 501	Interpreting Genesis to Song of Solomon	(4)
BLS 502	Interpreting the Prophets to Gospels	(4)
BLS 503	Interpreting Acts to Revelation	(4)

Theological studies: 10 credits

THS 501	Knowing the Triune God: Theology I	(4)
THS 502	Glorifying the God of our Salvation: Theology II	(4)
THS 503	Living as the Community of the Spirit: Theology III	(2)

Ministerial core studies: 12 credits

Required—4 credits:

DMS 501	Thinking Theologically about Ministry	(2)
DMS 506	Developing Godly Leadership for the 21st Century	(2)

Restricted electives—Select 8 credits from among the following:

DIS 501	Communicating Christ in Culture	(2)
DMS 502	Introducing Theology and Practice of Worship	(2)
EMS 505	Growing Disciples Intentionally	(2)
PTS 503	Practicing Evangelism and Apologetics	(2)
PTS 504	Maximizing the Church's Redemptive Influence	(2)
PTS 507	Providing Pastoral Counseling	(2)
PTS 508	Developing Strong Families	(2)
PTS 510	Preparing and Preaching Expository Sermons	(2)

Mentored Ministry: 6 credits

MFM 500	Discovering/Developing Your Ministry Potential	(2)
MFM 501-504	Mentored Field Ministry	(1+1+1+1)

(see program advisor for MFM/practicum details)

Specialization track: 8 credits

Select 8 credits from the courses below, or related electives with advisor approval:

YMS 501	Understanding Adolescent Development	(1)
YMS 502	Developing a Theological Model for 21st Youth Ministry	(2)
YMS 503	Managing Youth Ministry	(2)
YMS 504	Communicating to Youth	(1)
YMS 505	Issues for 21st Century Youth Ministry	(1)
YMS 506	Spiritual Formation of Youth	(1)
CNS 546	Counseling Adolescents	(1)

Open electives: 2 credits

Total: 60 credits

**YOUTH AND FAMILY
MINISTRY TRACK**

The Youth and Family Ministry track is designed to develop skilled ministry practitioners who are able to design effective local church ministry for both youth and families. Special attention will be given to helping parents fulfill their primary responsibility of teaching the truths of God from His Word.

In addition to the M.A. in Specialized Ministry core outcomes, the Youth and Family Ministry track attempts to achieve specific outcomes:

1. Know how to apply the principles of human learning to how people learn Bible truths.
2. Be confident in the ability to teach the Bible effectively.
3. Know how to design and implement an effective educational plan.
4. Know how to promote effectively the spiritual growth of others.
5. Know both the theory and the practice of ministry to youth and families.

“Local churches and para-church organizations need youth ministry workers who are skilled in teaching God’s Word, experts in adolescent culture, and professional in their management of the ministry. The complexities of the culture and the nature of adolescence require youth workers who can do serious biblical and theological reflection as they flesh out practical theology. They have to be lovers of God and lovers of people.”

Ron Marrs, Assistant Professor of Pastoral/Youth Ministry



6. Be one who has formulated a written statement of youth and family ministry philosophy that incorporates Scripture and an awareness of key philosophical issues.
7. Know how to utilize the goal setting process as an important element in enhancing the effectiveness of both one's own life and ministry.

The program requires a minimum of 60 credit hours:

Spiritual formation: 6 credits

SFS 501	Learning to Love God and Others	(2)
SFS 502	Practicing Prayer and Other Key Disciplines	(2)
SFS 504	Growing into Ethical Maturity	(2)

Biblical interpretation studies: 16 credits

DBS 506	Learning to Interpret Scripture	(4)
BLS 501	Interpreting Genesis to Song of Solomon	(4)
BLS 502	Interpreting the Prophets to Gospels	(4)
BLS 503	Interpreting Acts to Revelation	(4)

Theological studies: 10 credits

THS 501	Knowing the Triune God: Theology I	(4)
THS 502	Glorifying the God of our Salvation: Theology II	(4)
THS 503	Living as the Community of the Spirit: Theology III	(2)

Ministerial core studies: 12 credits

Required—4 credits:

DMS 501	Thinking Theologically about Ministry	(2)
DMS 506	Developing Godly Leadership for the 21st Century	(2)

Restricted electives—Select 8 credits from among the following:

DIS 501	Communicating Christ in Culture	(2)
DMS 502	Introducing Theology and Practice of Worship	(2)
EMS 505	Growing Disciples Intentionally	(2)
PTS 503	Practicing Evangelism and Apologetics	(2)
PTS 504	Maximizing the Church's Redemptive Influence	(2)
PTS 507	Providing Pastoral Counseling	(2)
PTS 508	Developing Strong Families	(2)
PTS 510	Preparing and Preaching Expository Sermons	(2)

Mentored Ministry: 6 credits

MFM 500	Discovering/Developing Your Ministry Potential	(2)
MFM 501-504	Mentored Field Ministry	(1+1+1+1)

(see program advisor for MFM/practicum details)

Specialization track: 8 credits

Select 8 credits from the courses below,

or related electives with advisor approval:

FMS 501	Family Ministry in the Church	(2)
FMS 503	Building the Pastoral Team	(2)
YMS 501	Understanding Adolescent Development	(1)
YMS 502	Developing a Theological Model for 21st Youth Ministry	(2)
YMS 503	Managing Youth Ministry	(2)
YMS 504	Communicating to Youth	(1)
YMS 505	Issues for 21st Century Youth Ministry	(1)
YMS 506	Spiritual Formation of Youth	(1)
CNS 546	Counseling Adolescents	(1)

Open electives: 2 credits

Total: 60 credits