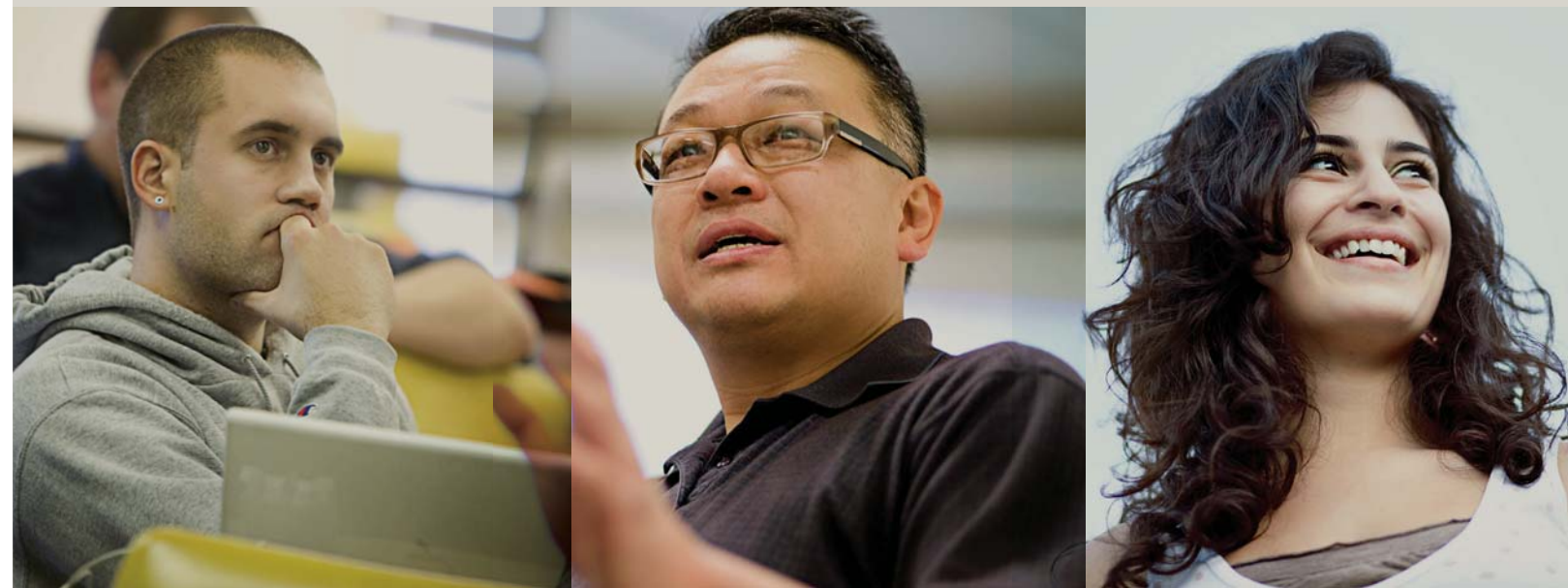




WESTERN SEMINARY



2009-2010
Academic Catalog
Master of Arts in Counseling
Degree Program

PORTLAND CAMPUS

Master of Arts (M.A.) in Counseling Programs

PROGRAM OBJECTIVES

Western Seminary offers several program options through the Portland campus. The Oregon Board approved Master of Arts (M.A.) in Counseling can be taken as a stand-alone degree, or combined with another degree to pursue a dual degree track. Dual degree options include the M.A. in Counseling and the M.Div. track in Pastoral Counseling; the M.A. in Counseling and the M.A. (Intercultural Studies); and the M.A. in Counseling and the M.A. in Specialized Ministries with emphases in Chaplaincy or Pastoral Care to Women.

In addition to the Seminary's general educational goals, the Counseling programs endeavor to achieve the following:

1. Equip counselors for ministry in and through the church and for outreach to the community.
2. Integrate biblical and theological foundations with the insights of psychology and practical counseling strategies.
3. Promote growth in Christian maturity demonstrated through effective interpersonal relationships.
4. Prepare individuals who are seeking state licensure and national certification.

The M.A. in Counseling is intended to prepare Christian counselors with the knowledge, skills, and insight needed to practice counseling in church, non-profit, clinical or school settings. Graduates of the M.A. program are educationally prepared for such vocations as church staff positions in pastoral counseling, related positions in parachurch organizations, family services, mental health clinics, residential and outpatient treatment programs, counseling centers, and public and private school counseling settings.

Western's counseling program asserts an integrative approach which seeks to understand and explain emotional, relational, behavioral, and spiritual problems that people face in life from a thoroughly biblical worldview. The counseling program places an emphasis on theological reflection and spirituality as they relate to the therapeutic process. The program also places an emphasis on marriage and family issues.

Four major areas of study are blended in the M.A. program: biblical, theological, counseling, and spiritual formation. The program combines three components. First is a quality classroom experience. A wide variety of teaching methods are utilized to assist individuals with differing learning styles. The second component is the application of the classroom education in a practical setting—the student's internship site. Western Seminary emphasizes learning by doing. Each student spends five semesters in internship positions actually doing what they are learning. The third component is the personal examination and reflection that takes place in a variety of settings, including small group case conferences and mentoring with faculty. In these settings the student is challenged to reflect upon the practical application of theory and what meaning it has for them not only professionally, but also personally.

The counseling program meets the educational requirements for licensure by the Oregon Board of Licensed Professional Counselors.

Additionally, graduates of the counseling program may choose to pursue certification as a Child Developmental Specialist in preparation for a career in school counseling. (For additional information on licensing and/or certification requirements, consult with the Counseling Department, the Oregon Board of Licensed Professional Counselors, or your local school district office.)

M.A. IN COUNSELING CORE OUTCOMES

In addition to the Seminary's general educational goals, the M.A. in Counseling program attempts to achieve specific outcomes. For each student, these outcomes are:

1. Be a person whose godliness is worthy of being emulated by others, and whose integrity imparts credibility to his/her ministry.
2. Be a person who experiences interdependency with others so that the interests of the whole group are best served.
3. Know significant themes and developments within biblical history to understand the "bigger picture" of God's redemptive program.
4. Know how to utilize the fundamental principles of hermeneutics to interpret and apply biblical texts accurately.
5. Know the tenets of historic orthodoxy.
6. Know at an introductory level assessment measures available to mental health practitioners.
7. Know his/her personal strengths, weaknesses, and other elements of individuality that can help or hinder ministry effectiveness.
8. Know the major theories of counseling and personality development.
9. Know how to effectively integrate his/her understanding of theology, spirituality and human behavior.
10. Know how to recognize and competently handle intercultural issues in counseling.
11. Know how to think critically so that various truth claims can be effectively evaluated.
12. Know how to build an effective therapeutic relationship.
13. Know how to accurately diagnose the major mental disorders and know how to establish and implement an effective treatment plan for each.

"Western's counseling program is unique in that it facilitates personal and professional development in an atmosphere that blends academic rigor with practical application. Not only will you develop practical skills and techniques, but you will also learn how to think and respond like an effective counselor."

Dr. Dave Wenzel, Professor of Pastoral Counseling
Chair, Division of Pastoral and Church Ministry Studies

14. Know how to identify and confront ethical dilemmas.
15. Know how to articulate a theology of marriage and apply theological and psychological principles in working with couples.
16. Know how to build upon his/her seminary training to be a true life-long learner.

ADMISSION REQUIREMENTS

In addition to the general requirements for admission to the Seminary given on pages 18-19, applicants to a counseling program must have earned an accredited baccalaureate degree with a cumulative grade point average of 3.0 or higher (on a 4.0 scale), including a breadth of liberal arts. Applicants who do not meet these general academic requirements may petition the Admissions Committee for consideration.

Entering counseling students are expected to bring a foundational knowledge of psychology. Proficiency in this foundational knowledge will be confirmed through a placement exam, required of all incoming counseling students. If deficiencies are indicated, remedial work will be required. Counseling students may satisfy these deficiencies in one of the following two ways: Complete the appropriate undergraduate course(s) at an approved institution, or complete a computer-assisted instructional program provided through the library services of Western Seminary. The student may not begin the second semester of counseling studies without satisfying proficiency requirements.

Applications must give evidence of personal character, interpersonal relationships, goals, motivation, and potential for future counseling ministry as fitting the program. These will include a vital spiritual life, growing and nurturing relationships with people, commitment to a biblical/theological orientation to the therapeutic process, and vocational aspirations involving the care and nurture of people. As a part of the admission process all counseling applicants will undergo a background criminal check.

M.A. IN COUNSELING

The M.A. in Counseling degree is conferred upon the attainment of certain personal and academic requirements. In addition to the general seminary requirements outlined on pages 31-32, degree candidates must (1) give evidence of a genuine Christian character, orthodox belief, and conduct consistent with a God-given call to a position of leadership; (2) complete all courses in the prescribed M.A. curriculum with a minimum grade point average of 2.5 overall, and 3.0 in the major. During their final semesters in the program students are required to pass the Counselor Preparation Comprehensive Exam, which is in preparation for National Certification and Oregon state licensure.

Western Seminary offers two principal tracks for Master of Arts in Counseling students: the Oregon track and the National track. The distinctive difference between these two tracks is the total number of counseling units. The Oregon track has 48 credits of counseling courses, the National track has 60. Each track has an additional 13 credits of Bible and theology.

OREGON TRACK

The Oregon Board of Licensed Professional Counselors and Therapists has set forth three core requirements for candidates seeking licensure in Oregon: a clinical experience component, an educational component, and an exam component. The educational component is detailed in the Oregon Administrative Rules (OAR) and is comprised of 48 credit hours of counsel-

Master of Arts in Counseling Core

61 / 73 CREDITS

Theological Studies [5] Biblical Studies [8]

Counseling Studies [43 / 56]

OREGON TRACK

Counseling Electives [5]

NATIONAL TRACK

Counseling Electives [4]

(see page 55 for detail)

DEGREE TOTAL

= 61 / 73 CREDITS

M.A. IN COUNSELING & M.A. IN INTERCULTURAL STUDIES (DUAL DEGREE)

**Spiritual Formation [5]
Additional Biblical Studies [6]
Additional Theological Studies [5]
Intercultural Ministry Studies [22]
Intercultural Internship [8]**

**DUAL DEGREE TOTAL =
107 CREDITS (OREGON TRACK)
119 CREDITS (NATIONAL TRACK)**
(see page 56 for detail)

M.A. IN COUNSELING & M.Div. IN PASTORAL COUNSELING (DUAL DEGREE)

**Spiritual Formation [5]
Additional Biblical Studies [8]
Biblical Language Studies [12]
Additional Theological Studies [11]
Ministerial Studies [18]**

**DUAL DEGREE TOTAL =
115 CREDITS (OREGON TRACK)
127 CREDITS (NATIONAL TRACK)**
(see page 56 for detail)

M.A. IN COUNSELING & M.A. IN SPECIALIZED MINISTRY (DUAL DEGREE)

**Spiritual Formation [5]
Additional Biblical Studies [6]
Additional Theological Studies [5]
Ministerial Studies [26]**

**DUAL DEGREE TOTAL =
103 CREDITS (OREGON TRACK)
115 CREDITS (NATIONAL TRACK)**
(see page 57 for detail)

ing instruction. Western Seminary's 48 credit hour track is approved by the Oregon Board of Licensed Professional Counselors and Therapists. This track is designed for students anticipating practicing in Oregon (or other states requiring a 48 semester hour program).

The M.A. in Counseling degree (Oregon track) requires 61 credits of study. The courses are drawn from counseling (48 credits), biblical studies (8 credits), and theological studies (5 credits).

Biblical interpretation studies: 8 credits

DBS 516	Survey of Learning to Interpret Scripture.....	(2)
BLS 511	Survey of Genesis to Song of Solomon.....	(2)
BLS 512	Survey of Prophets to Gospels.....	(2)
BLS 513	Survey of Acts to Revelation.....	(2)

Theological studies: 5 credits

THS 511	Survey of Knowing the Triune God: Theology I.....	(2)
THS 512	Survey of the God of our Salvation: Theology II.....	(2)
THS 513	Survey of Living as the Community of the Spirit: Theology III.....	(1)

Counseling studies: 48 credits

CNS 501	Clinical Foundations: Basic Counseling Skills/Interventions.....	(2)
CNS 503	Family Systems Therapy.....	(2)
CNS 504	Psychotherapeutic Systems.....	(2)
CNS 505	Psychopathology.....	(3)
CNS 506	Legal and Ethical Issues.....	(3)
CNS 507	Human Life Span Development.....	(3)
CNS 508	Introduction to Integrative Issues.....	(2)
CNS 509	Advanced Integration.....	(2)
CNS 510	Spiritual Development and Assessment.....	(2)
CNS 512	Group Counseling.....	(2)
CNS 513	Social and Cultural Foundations.....	(2)
CNS 518	Career and Lifestyle Development.....	(2)
CNS 524	Research in Counseling & Family Studies.....	(2)
CNS 525	Tests and Measurements.....	(3)
CNS 530	Internship Case Conference I.....	(2)
CNS 531	Internship Case Conference II.....	(2)
CNS 532	Internship Case Conference III.....	(2)
CNS 533	Internship Case Conference IV.....	(2)
CNS 534	Internship Case Conference V.....	(2)
CNS 557	Emergency Preparedness: Suicide Prevention.....	(1)
CNS 5xx	Counseling electives (Consult with department advisor) ...	(5)

Total: 61 credits

NATIONAL TRACK

Approximately half of the states require a 60 semester hour counseling curriculum for licensing. Western Seminary has designed the National track for students anticipating the possibility of seeking licensure in a 60-unit state. While Western cannot obtain the individual approval of these states, the curriculum was designed after a careful review of the requirements in these states. Students are encouraged to contact state licensing agencies to determine specific requirements. Western has built enough elective credits into the curriculum in order for the program to flex with any idiosyncratic requirements.

For additional information regarding differences between the Oregon and National tracks, and for help in choosing the right track for you, please visit our counseling program webpage, located at westernseminary.edu/counseling/PDX/index.htm.

The M.A. in Counseling degree (National track) requires 73 credits of study. The courses are drawn from counseling (60 credits), biblical studies (8 credits), and theological studies (5 credits).

Biblical interpretation studies: 8 credits

DBS 516	Survey of Learning to Interpret Scripture.....	(2)
BLS 511	Survey of Genesis to Song of Solomon.....	(2)
BLS 512	Survey of Prophets to Gospels.....	(2)
BLS 513	Survey of Acts to Revelation.....	(2)

Theological studies: 5 credits

THS 511	Survey of Knowing the Triune God: Theology I.....	(2)
THS 512	Survey of the God of our Salvation: Theology II.....	(2)
THS 513	Survey of Living as the Community of the Spirit: Theology III.....	(1)

Counseling studies: 60 credits

CNS 501	Clinical Foundations: Basic Counseling Skills/Interventions.....	(2)
CNS 502	Psychological Theory & Techniques.....	(2)
CNS 503	Family Systems Therapy.....	(2)
CNS 504	Psychotherapeutic Systems.....	(2)
CNS 505	Psychopathology.....	(3)
CNS 506	Legal and Ethical Issues.....	(3)
CNS 507	Human Life Span Development.....	(3)
CNS 508	Introduction to Integrative Issues.....	(2)
CNS 509	Advanced Integration.....	(2)
CNS 510	Spiritual Development and Assessment.....	(2)
CNS 512	Group Counseling.....	(2)
CNS 513	Social and Cultural Foundations.....	(2)
CNS 518	Career and Lifestyle Development.....	(2)
CNS 523	Human Sexuality.....	(2)
CNS 524	Research in Counseling & Family Studies.....	(2)
CNS 525	Tests and Measurements.....	(3)
CNS 526	Psychopharmacology.....	(1)
CNS 528	Neuropsychology.....	(1)
CNS 516	Marriage Counseling.....	(2)
CNS 529	Counseling Addictions.....	(2)
CNS 530	Internship Case Conference I.....	(2)
CNS 531	Internship Case Conference II.....	(2)
CNS 532	Internship Case Conference III.....	(2)
CNS 533	Internship Case Conference IV.....	(2)
CNS 534	Internship Case Conference V.....	(2)
CNS 544	Counseling Violence and Abuse Issues.....	(2)
CNS 557	Emergency Preparedness: Suicide Prevention.....	(1)
CNS 558	Emergency Preparedness: Trauma Counseling.....	(1)
CNS 5xx	Counseling electives (Consult with department advisor).....	(4)

Total: 73 credits

CHILD AND YOUTH COUNSELING SPECIALIZATION

Each year the Counseling Department admits a limited number of counseling students to a specialized Child and Youth Counseling track within the M.A. program. In addition to the counseling core counseling courses (43 or 56 credit hours listed above), Child and Youth Counseling students use their electives toward the following required courses, bringing their total to 63 (Oregon track) or 76 (National track). These courses include:

- CNS 542 Child Assessment and Treatment.....(1)
- CNS 546 Counseling Adolescents.....(1)
- CNS 561R Parent Skill Training.....(1)
- CNS 562J Healing Children Through Non-Directive Play.....(2)
- CNS 563K Advanced Play Therapy.....(2)
- CNS 53x Child Therapy Case Conference.....(2)

Total: minimum 63 (Oregon) or 76 (National) credits

This specialized track has been made possible in part through a grant from the Collins Foundation. In addition to these courses the students will be utilizing a state of the art training center on campus, including video and audio taping capabilities, one-way viewing rooms, live supervision of counseling sessions, and specialized reference materials. Upon completion of the specialization, students will receive a Child and Youth Counseling Certificate.

Students interested in this specialization, and also interested in At-Risk Children and Youth, are encouraged to audit one or more of the At-Risk Children and Youth courses listed on page 114.

M.A. IN COUNSELING/M.DIV. IN PASTORAL COUNSELING (DUAL DEGREE)

The M.A. in Counseling/M.Div. (Pastoral Counseling specialization) dual degree program expands the student's preparation in the biblical and theological areas, and adds a substantial ministerial emphasis (see the M.Div. program description). It is designed to prepare individuals for both professional counseling and such ministries as the pastorate, pastoral counseling, family ministries, pastoral care, chaplaincy, discipleship, and small group ministries. Additionally, the dual degree track program begins preparation for membership in the American Association of Pastoral Counselors. The Master of Arts in Counseling degree program is designed to meet the educational requirements for licensure by the Oregon State Board of Licensed Professional Counselors.

This dual degree track requires 54 credits in addition to the 61 or 73 credits listed above for the M.A. in Counseling degree.

Spiritual formation studies: 5 credits additional

- SFS 501 Learning to Love God and Others(2)
- SFS 502 Practicing Prayer and Other Spiritual Disciplines.....(2)
- SFS 514 Survey Growing in Ethical Maturity.....(1)

Biblical interpretation studies: 8 credits additional

- Substitute DBS 506, BLS 501, BLS 502, BLS 503 for DBS 516, BLS 511, BLS 512, BLS 513

Biblical language studies: 12 credits additional)

- (see p. 36 on biblical language options)
- NTS 501 Functional Foundations of Greek.....(3)
- NTS 502 Functional Application of Greek(3)
- or
- NTS 508 Introducing Foundation for Greek Exegesis(3)
- NTS 509 Greek Reading and Syntax(3)
- (Students complete either NTS 501/502 or NTS 508/509)
- OTS 501 Functional Foundations of Hebrew(3)
- OTS 502 Functional Application of Hebrew(3)
- or
- OTS 508 Introducing Foundation for Hebrew Exegesis(3)
- OTS 509 Hebrew Reading and Syntax(3)
- (Students complete either OTS 501/502 or OTS 508/509)

Theological studies: 11 credits additional

- Substitute THS 501, THS 502, THS 503 for THS 511, THS 512, THS 513
- THS 508 Integrating Ministry and Theology.....(2)
- CHS 505 Wisdom from Church History(4)
- or
- CHS 506 Insight and Inspiration from Church History.....(2)
- CHS 5xx Church History elective(2)
- (Students complete either CHS 505 or CHS 506 and a CHS elective)

Ministerial studies: 18 credits

- DIS 501 Communicating Christ in Culture(2)
- DMS 501 Thinking Theologically about Ministry.....(2)
- DMS 502 Introducing Theology and Practice of Worship(2)
- DMS 506 Developing Godly Leadership for the 21st Century.....(2)
- EMS 505 Growing Disciples Intentionally(2)
- PTS 503 Practicing Evangelism and Apologetics(2)
- PTS 504 Maximizing the Church's Redemptive Influence(2)
- PTS 508 Developing Strong Families(2)
- PTS 510 Preparing and Preaching Expository Sermons(2)

Total: 61 & 54 = 115 (Oregon) or 73 & 54 = 127 (National)

M.A. IN COUNSELING/M.A. (INTERCULTURAL STUDIES) (DUAL DEGREE)

The M.A. in Counseling/M.A. (Intercultural Studies) dual degree is specifically designed for students who envision their future will include a significant amount of involvement with both counseling and intercultural settings. The program is an excellent choice for those individuals who desire to utilize counseling skills as a missionary or some other position within a different culture. While the program cannot apply counseling training specific to any one culture, students are equipped to begin the process of application for their intended setting.

Two internship periods highlight the program. Students will train in counseling internships in the Portland metropolitan area. Additionally, students will complete a full-time, supervised intercultural internship lasting six months or longer (see the M.A. [Intercultural Studies] program description, page 51).

(This dual degree track requires 46 credits in addition to the 61 or 73 credits of the M.A. in Counseling program listed above.)

Spiritual formation studies: 5 credits additional

SFS 501	Learning to Love God and Others	(2)
SFS 502	Practicing Prayer and Other Spiritual Disciplines.....	(2)
SFS 514	Survey Growing in Ethical Maturity.....	(1)

Biblical interpretation studies: 6 credits additional

Substitute BLS 501, BLS 502, BLS 503 for BLS 511, BLS 512, BLS 513

Theological studies: 5 credits additional

Substitute THS 501, THS 502, THS 503 for THS 511, THS 512, THS 513

Intercultural foundation studies: 10 credits

DIS 501	Communicating Christ in Culture	(2)
DIS 505	Biblical Theology of Mission	(2)
DIS 506	Applied Cultural Analysis	(2)
DIS 508	Applied Anthropology	(2)
DIS 516	Applied Linguistics	(2)

Intercultural specialization studies: 8 credits

Restricted electives—Select 8 credits from among the following:

DIS 502	Perspectives on World Ministry	(3)
DIS 520	History of Missions	(2)
DIS 522	Starting and Reproducing Churches	(2)
DIS 524	Foundations: At Risk Children/Youth.....	(2)
DIS 526	Religions of the World	(2)
DIS 553	History of Women in Missions	(2)
DIS 562H	Introduction to Islam	(2)

Mentored ministry experience: 4 credits

DIS 500	Discovering and Developing Ministry Potential	(2)
DIS 539	Mentored Ministry Experience	(1,1)

Intercultural Internship: 8 credits

DIS 534	Adapting Cross-Culturally	(2)
DIS 531	Intercultural Ministry Internship	(4)
DIS 570	Senior Project	(2)

Total: 61 + 46 = 107 (Oregon) or 73 + 46 = 119 (National)

M.A. IN COUNSELING/M.A. IN SPECIALIZED MINISTRY (DUAL DEGREE)

The M.A. in Counseling/M.A. in Specialized Ministry dual degree is specifically designed for students who envision their future will include ministry to and with women or as a chaplain to special populations. Please see further information on page 44 (Chaplaincy) or 47 (Pastoral Care to Women).

This dual degree track requires 42 credits in addition to the 61 or 73 credits listed above for the M.A. in Counseling degree.

Spiritual formation studies: 5 credits additional

SFS 501	Learning to Love God and Others	(2)
SFS 502	Practicing Prayer and Other Spiritual Disciplines.....	(2)
SFS 514	Survey Growing in Ethical Maturity.....	(1)

Biblical interpretation studies: 6 credits additional

Substitute BLS 501, BLS 502, BLS 503 for BLS 511, BLS 512, BLS 513

Theological studies: 5 credits additional

Substitute THS 501, THS 502, THS 503 for THS 511, THS 512, THS 513

Ministerial studies: 12 credits

Required—4 credits:

DMS 501	Thinking Theologically about Ministry.....	(2)
DMS 506	Developing Godly Leadership for the 21st Century.....	(2)

Or

PCW 513	Women in Leadership	(2)
---------	---------------------------	-----

Restricted electives—Select 8 credits from among the following:

DIS 501	Communicating Christ in Culture	(2)
DMS 502	Introducing Theology and Practice of Worship	(2)
EMS 505	Growing Disciples Intentionally	(2)
PTS 503	Practicing Evangelism and Apologetics	(2)
PTS 504	Maximizing the Church's Redemptive Influence	(2)
PTS 508	Developing Strong Families	(2)
PTS 510	Preparing and Preaching Expository Sermons	(2)

Or

PCW 561	Developing & Delivering Life Changing Messages	(2)
---------	--	-----

Mentored ministry: 6 credits

MFM 500	Discovering and Developing Ministry Potential	(2)
MFM 501-504	Mentored Field Ministry	(1 + 1 + 1 + 1)

Or

ICS 530	Chaplaincy Practicum	(4)
---------	----------------------------	-----

Chaplaincy specialization track: 8 credits

Select 8 credits from the courses below,

or related electives with advisor approval:

CNS 503	Family Systems	(3)
CNS 512	Group Counseling	(3)
ICS 501	The Chaplaincy	(2)
ICS 505	Hospital Chaplaincy	(2)
ICS 506	Military Chaplaincy	(2)
PTS 503	Practicing Evangelism and Apologetics	(2)
PTS 506	Pastoral Duties	(2)
PTS 515X	Advanced Expository Preaching I	(2)
PTS 515Y	Advanced Expository Preaching II	(2)

Pastoral Care to Women specialization track: 8 credits

Select 8 credits from the courses below,

or related electives with advisor approval.

PCW 511	Pastoral Understanding of Women	(2)
PCW 512X	Women in Pain, Part 1	(2)
PCW 512Y	Women in Pain, Part 2	(2)
PCW 513	Women in Leadership	(2)
PCW 514	Building Relational Ministries to Women	(2)
PCW 515	Developing & Delivering Life Changing Messages	(2)
PCW 522	Women and Spiritual Warfare: Championing Women to Stand Firm in the Face of Adversity	(2)
PCW 561F	Develop Life Changing Bible Study Curriculum	(1)
DIS 553	Women in Missions	(2)
THS 572	Integrating a Theology of Women in Ministry.....	(2)

(Note: Students in the PCW track are required to complete at least five PCW specialized courses. These may include the PCW courses listed in the ministry core described above.)

Total: 61 + 54 = 115 (Oregon) or 73 + 54 = 127 (National)