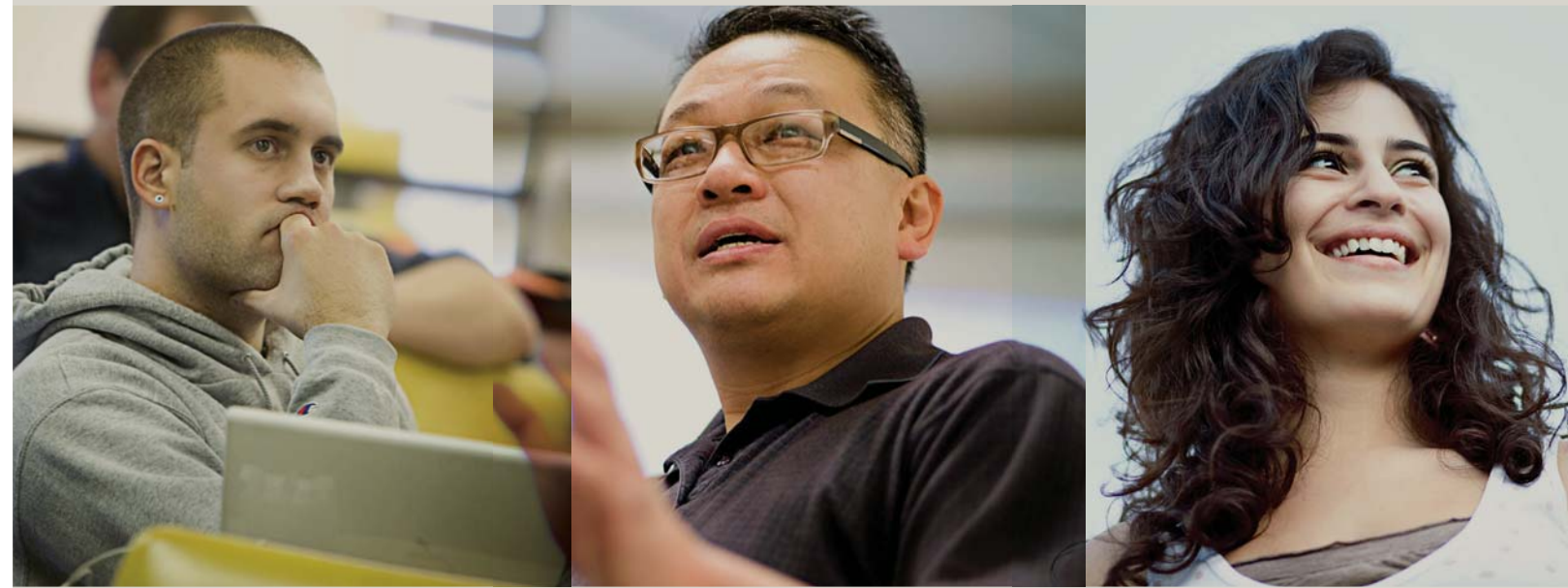




WESTERN SEMINARY



2009-2010
Academic Catalog
Graduate Studies Diploma
Graduate Studies Certificate
Degree Program

PORTLAND CAMPUS

Graduate Studies Diploma Program

PROGRAM OBJECTIVES

Western Seminary offers the flexible, one-year Graduate Studies Diploma (GSD) program for individuals with varying objectives for theological education. The program may be appropriate for: (1) Christian laypersons who desire one year of theological study to equip them for effective ministry in the local church or elsewhere; (2) mission personnel in nonprofessional roles who seek formal biblical, theological, and missiological training; (3) Christian workers with limited time available for theological study; (4) individuals who need a “trial year” in seminary to better define their goals and calling; (5) Christian educators who need to continue their education in biblical and theological studies; (6) professionals who wish to supplement their college/university education with a year of theological study; and (7) spouses of Western students who wish to concurrently complete a program of studies in anticipation of vocational ministry. Since these credits could also subsequently be applied to M.A. or M.Div. degree programs (depending upon the specific curricular requirements for each), the GSD is also suitable for those who wish to enroll in seminary without making the commitment required for a degree program. GSD students are able to select the discipline in which they will take most (or all) of this coursework.

The Diploma program, by itself, is not adequate preparation for vocational ministry. While it is not intended to provide a full level of training and education for pastoral, church-planting, and teaching ministries, it does provide a foundation of biblical education and ministry skills helpful for bi-vocational ministries and those serving in a support capacity. The program is designed to fulfill minimum educational requirements of certain parachurch and mission organizations. The diploma program may be used as the first year of either the M.Div. or M.A. programs.

Graduate Studies Diploma Core

22 CREDITS

Biblical & Theological Studies [16]

Intercultural OR Pastoral & Church Ministries [6]

CONCENTRATION STUDIES:

8 CREDITS

(Selected with your advisor)

**DIPLOMA TOTAL
= 30 CREDITS**

ADMISSION REQUIREMENTS

Students entering the Diploma program are expected to present a baccalaureate degree and give evidence of Christian faith, character, promise, and maturity. The same admission standards, materials, and procedures as for the M.Div. program are required. Applicants who seek admission, but do not meet admission requirements, may seek special consideration from the Admissions Committee.

GRADUATE STUDIES DIPLOMA REQUIREMENTS

To earn a diploma, a student must complete 30 semester hours of study with a 2.5 cumulative grade point average. The required 30 credit hours will consist of 16 credits from the Division of Biblical and Theological Studies, 6 credits from either the Division of Intercultural Studies or Pastoral and Church Ministries, and 8 credits of open electives. Students, with advisor consent, will choose one concentration area of at least 8 credits grouped around a common discipline or theme. For students anticipating or considering later applying these credits towards a masters degree (M.A. or M.Div.), the 22 required credits will normally be chosen from foundational degree courses (e.g., DBS 506, BLS 501, SFS 501, THS 501, etc.).

Many courses are offered by an intensive (on campus) schedule, or through a variety of distance learning formats. The intensive module permits study through convenient scheduling options throughout the year. The distance learning format provides opportunity to individuals outside Portland to study and learn while remaining in their home area and ministries.

Division of Biblical and Theological Studies: 16 credits

Select courses with DBS, BLS, NTS, OTS, SFS, CHS, or THS prefixes.

Division of Intercultural or Pastoral and Church Ministries: 6 credits

Select courses with DMS, DIS, CNS, EMS, ICS, MCS, MFM, PCW, PTS or YMS prefixes.

Concentration Electives: 8 credits Total: 30 credits

Graduate Studies Certificate Program

Western Seminary offers the short and flexible Graduate Studies Certificate (GSC) program for individuals who desire limited and focused theological training for graduate credit, and who are interested in receiving a certificate (as opposed to a diploma or degree) upon completing their course of study. Since these credits could also subsequently be applied to diploma or degree programs (depending upon the specific curricular requirements for each), the GSC is also suitable for those who wish to enroll in seminary without making the commitment required for these longer programs. GSC students are able to select the discipline in which they will take most (or all) of this coursework.

Students who wish to pursue this type of program, but on an enrichment basis, should take the Advanced Studies Certificate offered by the Center for Lifelong Learning (see page 91).

ADMISSION REQUIREMENTS

Students entering the certificate program for credit are expected to present a baccalaureate degree and give evidence of Christian faith, character, promise, and maturity. The same admission standards, materials, and procedures as for the M.Div. program are required. Applicants who seek admission, but who do not meet admission requirements, may seek special consideration from the Admissions Committee.

GRADUATE STUDIES CERTIFICATE REQUIREMENTS

To earn a certificate for credit a student must complete 16 credit hours of study with a 2.5 cumulative grade point average. The required 16 credits will consist of 8 credits of one concentration and 8 credits of open electives. Students, with advisor consent, will choose one concentration area of at least 8 credits grouped around a common discipline or theme. For students anticipating or considering later applying these credits towards a master's degree (M.A. or M.Div.), the 8 required credits will normally be chosen from foundational degree courses (e.g., DBS 506, BLS 501, SFS 501, THS 501, etc.).

Many courses are offered by an intensive (on campus) schedule, or through a variety of distance learning formats. The intensive module permits study through convenient scheduling options throughout the year. The distance learning format provides opportunity to individuals outside Portland to study and learn while remaining in their home area and ministries.

Concentration Study: 8 credits

Select courses from one discipline or theme

Concentration Electives: 8 credits

Total: 16 credits

Graduate Studies Certificate

CONCENTRATION STUDIES:

8 CREDITS

(Selected with your advisor)

OPEN ELECTIVES:

8 CREDITS

CERTIFICATE TOTAL

= 16 CREDITS