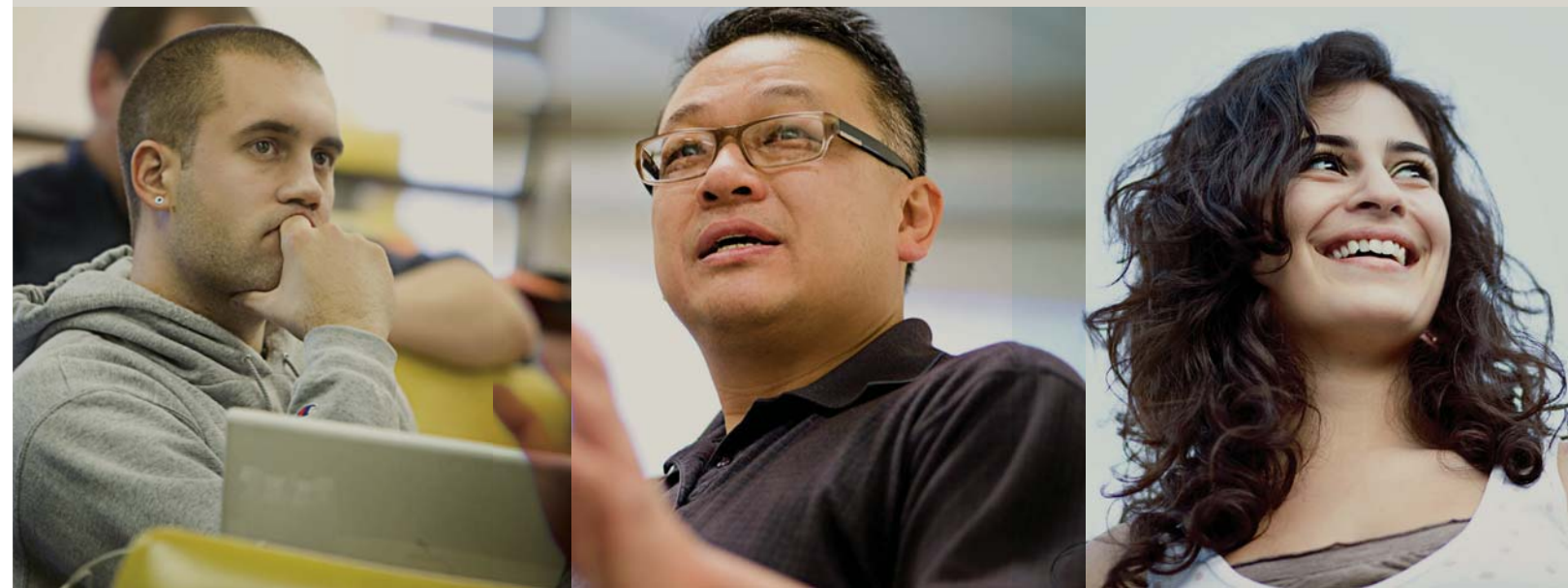




WESTERN SEMINARY



**2009-2010
Academic Catalog
Doctor of Missiology (D.Miss.)
Degree Program**

PORTLAND CAMPUS

Doctor of Missiology (D.Miss.) Program

The Doctor of Missiology (D.Miss.) is an advanced professional degree intended to aid in the development of leadership for the worldwide church. The program is designed specifically for those who are faced with the challenge of a pluralistic society and who work within a multi-ethnic context. Mature church leaders from Asia, Africa, and Latin America who participate in the program ensure cross-fertilization of perspectives and spiritual insights with those from North America and Europe.

PROGRAM OVERVIEW

The Doctor of Missiology is an in-service program introducing the student to the literature and resources of missiology, with special emphasis in the area relevant to the student's on-going ministry. The program is not separate from the student's ministry, but is intended to integrate higher learning with practical relevance. Time invested in D.Miss. studies should result in personal enrichment and ministry improvement. Faculty members serve as consultants to assist students to be more fruitful in ministry.

Five components are included in the program: program focus, competency modules, scholarly research, comprehensive examination, and dissertation. The program focus expresses the student's opportunities or concerns in ministry. It may be a fundamental question of understanding the group being reached, or identifying ministry opportunity and building a strategy for evangelism and church-building among that group, or development of a leadership training program appropriate for a particular group, or a similar challenge.

Competency modules include lectures, seminars, practical assignments, and field work intended to introduce the student to a specific area and through student-faculty interaction to chart the applications to the individual student's educational and intercultural ministry. These modules are comparable to what are often called "courses."

The written comprehensive examination demonstrates the student's understanding and application of intercultural and practical insights to the student's own program focus.

The D.Miss. dissertation is the result of study, research, and fieldwork centered around the program focus. It contains recognition and clarification of a major topic in mission, a process to research the topic at hand, leading to implementation in ministry or advancement in missiological understanding. The dissertation brings together work done in the competency modules and the refining of thought through interaction with faculty and field research.

The D.Miss. program is usually undertaken as a series of short periods of intensive study and interaction, followed by longer periods of reflection and application to ministry in the field. On a full-time study basis, the equivalent of a two-year period is necessary to complete the doctorate. It is understandable to spread this over a longer period of time to ensure interaction of studies and integration with current ministry. Much flexibility in scheduling is possible, with periods in residence at the Portland campus possible from one week to one year.

The Doctor of Missiology and Doctor of Ministry programs at Western Seminary are two professional degrees with significant compatibility: two "gateway courses," a non-residence module format, field research, and the dissertation. Students enrolled in one program may cross-register for up to two electives (six credit hours) in the other. The module format of both programs is designed to make doctoral level training programs accessible to active practitioners in ministry and missions.

ADMISSION REQUIREMENTS

In addition to the Seminary's general requirements for admission described on pages 18-19, an applicant for the Doctor of Missiology program shall hold either a Master of Divinity degree or a two-year master's degree in appropriate theological and missiological disciplines from an institution accredited regionally and/or by the Association of Theological Schools (ATS) in the United States and Canada. A cumulative grade point of at least 3.0 (on a 4.0 point scale) in graduate studies is required.

Doctoral applicants who are otherwise qualified but whose graduate degree is not a M.Div. or other specified master's degree may seek admission by establishing the educational equivalent of the admission requirement. Interested parties are encouraged to contact the Registrar for further information.

An applicant with a degree from an institution not regionally or ATS accredited may seek admission by special review. A copy of the institution's catalog, setting forth faculty credentials, curriculum, facilities and learning resources, shall be submitted at the time of application. Any additional documentation the applicant wishes to submit to assist the admissions committee in its decision is welcome. If the review is favorable, the student will be admitted on academic probation. The probationary status will be reviewed upon the satisfactory completion (3.0 average or greater) of three competency modules.

D.Miss. applicants are expected to have at least two years or more of effective ministry, preferably with an orientation to intercultural outreach.

A set of admission materials must be completed and on file in the Admissions Office before action can be taken. These materials include an admission essay; experience statement (or professional vita); a statement of supportive endorsement from the church or agency with which the applicant serves; four professional and personal references; and official transcripts of all college, graduate-level, and seminary education (English translation required, if necessary). In addition, doctoral applicants must provide a sample of writing and research skills. This commonly takes the form of a seminary research paper, articles for publication or distribution, or materials produced for use in one's ministry. The sample selected should reflect the applicant's writing skills in form, style, and content.



Doctor of Missiology Program, continued

Since English is the contemporary language of world scholarship, D.Miss. students must have the written and oral skills in English appropriate for research and dialogue at the advanced level. Applicants for whom English is not their first language must pass an entry written and oral English examination (TOEFL) with a minimum score of 20 on each of the four section tests of the TOEFL-IBT.

If the D.Miss. student intends to enter the United States on a student visa, at least three months are necessary to secure admission approval and visa documentation. For further information on international student admission, please see page 20.

DEGREE REQUIREMENTS

GATEWAY COURSES. Incoming students are required to attend the Program Orientation (non-credit) to learn about the curriculum design and related matters. During the two gateway courses (DIS 711 and DIS 712) the student will complete a concise statement of the program focus of his/her work; begin development of bibliographies and identify potential resources pertaining to the program focus; develop and gain preliminary approval of the “individual learning contract”; and form the Doctoral Committee to guide the program and approve the dissertation.

LEARNING CONTRACT. Each student’s program is based on a learning contract that includes: statement of the program focus; initial bibliographies; preliminary timetable for completion of each program requirement; and formation of the Doctoral Committee.

COMPETENCY MODULES. Students develop theoretical understanding and ministerial competence in ten areas. Required courses are marked *. (Students may elect to substitute courses from the D.Min. program with the approval of the program director.)

DIS 711	Foundations of Missiology and History of Mission *	(3)
DIS 712	Proposal and Research Design *	(3)
DIS 715	Theology of Christian Mission	(3)
DIS 721	Principles of Intercultural Communication *	(3)
DIS 725	Integrated Research Methodologies *	(3)
DIS 741	Cultural and Education Anthropology *	(3)
DIS 742	Contextualization and Leadership	(3)
DIS 744	Evangelism and Church Planting Movements*	(3)
DIS 747	Intercultural Education *	(3)
DIS 751	D.Miss. Seminar	(3)
DIS 790	Dissertation: Field Research Integration *	(3+)
DIS 791	Dissertation: Research Report *	(3+)

Total: 36+ credit hours

Each competency module consists of a one-week residential seminar focused on knowledge and understanding, followed by a guided field research project focused on the student’s own ministry context.

The Doctor of Missiology at Western Seminary is a post-graduate professional program of study leading to a formal degree in missiology which involves a standard combination of academic courses, personal growth and professional performance. Consequently, the professional assessment of students involves not only an evaluation of academic competence but also an assessment of ministerial competence and overall professional development. Assessment meetings are held by the faculty of DIS and chaired by the

Director. The purpose of the assessment is to review each student’s progress in meeting academic, integrative and professional expectations.

COMPREHENSIVE EXAM. The comprehensive exam for advancement to candidacy for the degree will be taken after all competency modules have been satisfactorily completed. Prior to scheduling the examination, a formal dissertation proposal will be submitted and approved by the Doctoral Committee Chair. A candidate who does not pass the initial examination may request a subsequent examination, to be administered after a minimum of six months have elapsed.

DISSERTATION. The D.Miss. Dissertation will be initially proposed during the two gateway courses (DIS 711 & DIS 712). All studies completed in and through the competency modules shall be designed to build toward the dissertation. It will not only reflect personal study and practical experience, but shall make a meaningful contribution to intercultural ministry. It must also evidence substantial theoretical and biblical foundations. Students register for DIS 790 Doctoral Dissertation: Field Research at the outset, followed by DIS 791 Doctoral Dissertation: Research Report. A minimum of three credits are required for each phase of the research project. A minimum of one credit each semester is required from commencing the dissertation until final approval. When all work has been completed and the finished work meets the approval of the student’s Doctoral Committee Chair, a Presentation or Defense of the dissertation is required by the committee. Such a presentation will usually cover the purpose, methodology, and content of the dissertation.

A minimum grade point average of 3.0 must be maintained throughout the program. If the student receives a grade for any one course below a “B,” he or she will be placed on academic probation and continuance in the program will be in jeopardy. Two grades below a “B” are grounds for dismissal from the program.

The Doctor of Missiology degree is conferred upon the attainment of certain personal and academic requirements. In addition to the general seminary requirements outlined on pages 31-32, degree candidates must (1) give evidence of a genuine Christian character, orthodox belief, and conduct consistent with a God-given call to a position of leadership; (2) complete all components of the program, accumulating at least 36 hours of credit as described above.

D.MISS. CORE OUTCOMES

The D.Miss. program seeks to equip people for ministry in an intercultural context in order to:

1. Spiritually: understand and practice intercessory prayer as central in Christian ministry and “making disciples” as core of the Great Commission.
2. Attitudinally: transmit a contagious missionary vision for ministry, passionate concern for the lost, commitment for evangelism and church-planting/building.
3. Competently: formulate and practice a holistic understanding of ministry, integrating theology, missiology, communication and linguistic sciences, anthropology, and related disciplines.