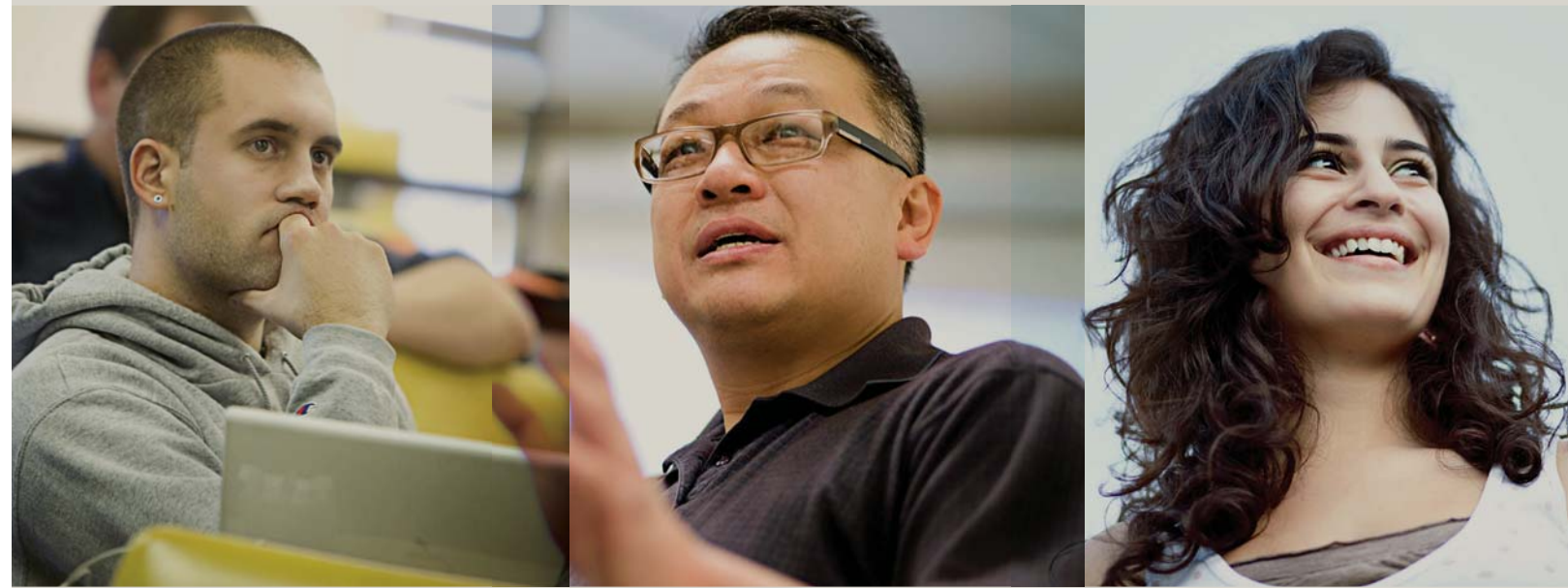




WESTERN SEMINARY



**2009-2010
Academic Catalog
Center for
Lifelong Learning**

Introduction to CLL

Western Seminary's Center for Lifelong Learning (CLL) provides seminary-level technology-mediated education to both resident and non-resident students. The Center's academic programs include seminary courses for students who have been admitted to degree, diploma or certificate programs, and non-credit courses for those who desire advanced ministry training for their own personal growth and development.

Historically, Western has been a pioneer in external education, introducing video courses in the early 1980s. Today the Center for Lifelong Learning offers a wide variety of learning options, including DVD-ROM/Internet and audio courses. Those who benefit from external studies include: pastors and other church personnel seeking on-the-job training; missionaries satisfying mission board requirements or continuing education needs; prospective pastors, missionaries, and others considering full-time ministry; future and current resident seminary students; lay leaders, teachers, and workers desiring in-depth biblical and theological training, and those with a course-specific interest.

External students have many educational options from which to choose. For graduate credit, students may:

1. Earn up to one-half of the 60-credit Master of Arts in Specialized Ministry In-Ministry track by distance education. When combined with the program's distinctive on-campus intensives, qualified students can complete the M.A. program in approximately 3 ½ years without relocating to a Western Seminary campus for residency. For more information on the innovative M.A. in Specialized Ministry In-Ministry track program, please see pages 43 & 78 of this catalog.
2. Use external studies to **supplement** the residential component of their degree program, as long as at least 30 credits of either a Master of Divinity or Master of Arts program are completed via residential studies. This option is ideal for students who desire to begin, continue or finish their seminary studies at a location that precludes attendance at a Western Seminary campus. (This option is dependent upon the availability of appropriate courses, which are selected with the approval of the program advisor.) For more information on residency requirements, please see page 28.
3. Earn a 30-credit **Graduate Studies Diploma**, the equivalent of one full year of resident study. Some diplomas may be earned entirely through distance education; see pages 58 & 87 for diploma details. Courses taken toward these diplomas may apply to other Western educational programs. Interested students should consult the Admissions Office.
4. Earn a 16-credit **Graduate Studies Certificate**. Some certificates may be earned entirely through distance education; see pages 59 & 88 for certificate details. Courses taken toward these certificates may apply to other Western education programs.
5. Complete DVD-ROM/Internet and audio courses on a **course-by-course** basis. Western Seminary courses address many of the most important areas of the Christian life and ministry preparation and will help any individual grow in grace and in truth. Christian

school teachers in the Association of Christian Schools International (ACSI) should check with their ACSI offices to ensure that CLL courses will satisfy certification requirements in Bible and professional studies.

ADMISSIONS AND ADMINISTRATIVE INFORMATION

Students seeking to take Western's external courses for credit must meet the general admission standards for Western Seminary as described on pages 18-19 of this catalog. To apply for admission, students must complete a credit application and submit appropriate fees. Western's Admissions Office reviews all applications and recommends approval for graduate study. Students approved for external studies for credit may take up to twelve semester credits before applying to enter a specific degree or certificate program through Western Seminary. Students should contact the Admissions Office for specific details before enrollment.

Those students desiring to complete courses on a non-credit basis complete a non-credit application & registration form, but are not subject to the general admissions process due to their non-credit status. Non-credit students do not earn seminary credit and their work does not apply toward seminary degrees or graduate certificates.

TUITION AND FEES FOR EXTERNAL COURSES

Credit application fee (one-time)	\$50
Credit tuition, per hour	\$410
Non-Credit (audit/enrichment) tuition, per hour	\$140
Advanced Studies Certificate application fee	\$50

Tuition and fees do not include the costs for textbooks. For complete details, consult the Center for Lifelong Learning.

While Western's external courses have been accepted by a number of other schools as transfer credit, this decision is always at the discretion of the receiving school. Students seeking such an application should consult the admissions office of their chosen institution before enrolling in external courses from Western or any other seminary.

All students taking external courses for credit have their work rigorously evaluated by assigned personnel from the faculty and staff of Western Seminary. Graduate performance equal to resident student levels is expected of external students.

For complete details on diploma and certificate programs contact:

WESTERN SEMINARY CENTER FOR LIFELONG LEARNING
5511 S.E. Hawthorne Blvd., Portland, OR 97215-3367
800.893.8567 or 503.517.1900 • cll@westernseminary.edu
www.westernseminary.edu • www.wscll.net

Advanced Study Certificate

The Advanced Studies Certificate (ASC) is designed for individuals who desire limited and focused theological training, but who either do not desire graduate credit for their work or who do not meet the prerequisites to receive graduate credit. No formal academic credit is earned in the ASC program. Learning Units (LUs) are awarded. ASC participants make the same choices among available tracks as those offered to Graduate Studies Certificate participants (see pages 59 & 88 for details). Participants who wish to pursue this type of program for graduate credit should take the Graduate Studies Certificate option.

ADMISSION REQUIREMENTS

Participants entering the certificate program are expected to present evidence of Christian faith, character, promise, and maturity. A high school diploma is required; a baccalaureate degree is not required.

ADVANCED STUDIES CERTIFICATE REQUIREMENTS

To earn an Advanced Studies Certificate, a participant must complete 18 LUs. Many courses are offered by the Center for Lifelong Learning through a variety of distance learning formats: video, audio, or DVD-ROM. This provides opportunity to individuals to study and learn while remaining in their home area and ministries. On-campus courses may only be taken by formal institutional approval.

Advanced Studies Certificates are currently offered in four areas: Biblical and Theological Studies, Intercultural Studies, Pastoral and Church Ministry Studies, and Pastoral Care to Women.

BIBLICAL AND THEOLOGICAL STUDIES CONCENTRATION. Participants select eight LUs of course work from the Center for Lifelong Learning (CLL) in the areas of BLS, DBS, NTS, INT, IOT, ICH, SFS, IST and THS studies. Eight LUs may be taken from any CLL course or from a combination of non-course seminar events, with program advisor's approval. The final two LUs are granted for successful completion of an integrative project, demonstrating the ability to combine course principles in a practical ministry application.

INTERCULTURAL STUDIES CONCENTRATION. Participants select eight LUs of course work from the Center for Lifelong Learning (CLL) in the areas of DIS or IWM. Eight LUs may be taken from any CLL course or from a combination of non-course seminar events, with program advisor's approval. The final two LUs are granted for successful completion of an integrative project, demonstrating the ability to combine course principles in a practical ministry application.

PASTORAL AND CHURCH MINISTRY STUDIES CONCENTRATION. Participants select eight LUs of course work from the Center for Lifelong Learning (CLL) in the areas of EMS, PCW, ICE, PTS or YMS studies. Eight LUs may be taken from any CLL course or from a combination of non-course seminar events, with program advisor's approval. The final two LUs are granted for successful completion of an integrative project, demonstrating the ability to combine course principles in a practical ministry application.

PASTORAL CARE TO WOMEN CONCENTRATION. The ASC in Pastoral Care to Women is an ideal program for expanding one's experience and expertise in the field of ministering to women. This program increases compassion, understanding, skills and cutting edge ideas for ministry to women. The solid biblical base brings depth and validity to each course. The ASC provides a balance of pastoral counsel for women, leadership development, biblical teaching, and program planning. The many changes in society and the church challenge us to reevaluate ministry effectiveness. The program prepares participants to serve in church, parachurch or compassion ministries to women. To earn an ASC in the area, the following curriculum is taken. PCW courses may be taken on campus or via CLL.

Pastoral Care to Women courses: 8 LUs

Select 8 LUs from the courses below:

PCW511 Pastoral Understanding of Women.....	2 LUs
PCW512X Women in Pain, part I.....	2 LUs
or	
PCW512Y Women in Pain, part II.....	2 LUs
PCW513 Women in Leadership.....	2 LUs
PCW514 Building Relational Ministries to Women	2 LUs
PCW515 Develop and Deliver Life Changing Messages	2 LUs
PCW522 Women and Spiritual Warfare: Championing Women to Stand Firm in the Face of Adversity.....	2 LUs

Restricted electives: 8 LUs

Eight LUs may be taken from any other PCW or CLL course or from a combination of non-course seminar events, with program advisor's prior approval.

Integrative Project: 2 LUs

Two LUs are granted for successful completion of an integrative project, demonstrating the ability to combine course principles in a practical ministry application.

External Studies Course Descriptions

The courses listed on the following pages are available for seminary credit or may be taken on a non-credit enrichment basis. Course listings are arranged in alphabetical order by course prefix within three divisions of study.

Division of Biblical and Theological Studies

DBS	Biblical Interpretation
BLS	Biblical Literature (IOT & INT)
NTS	New Testament Language and Literature
CHS	Historical Theology (ICH)
SFS	Spiritual Formation
THS	Systematic and Biblical Theology (IST)



External Studies Course Descriptions

Division of Intercultural Studies

DIS Intercultural Studies (IWM)

Division of Pastoral and Church Ministries

DMS Ministry Studies

EMS Educational Ministry (ICE)

PCW Pastoral Care to Women

PTS Pastoral Ministry (IPT)

YMS Youth Ministry Studies

DIVISION OF BIBLICAL AND THEOLOGICAL STUDIES

DBS 506E – Learning to Interpret Scripture. Dr. Robert A. Vogel, Ph.D.

In this course you will study the foundational principles and interpretive procedures of the grammatico-historical method of biblical interpretation. You will also apply these principles and procedures in actual Bible study, using the English Bible. Required during the first year of M.A. or M.Div. studies. DVD-ROM format. 4 credits or 4 Learning Units.

DBS 506XE – Interpretation Principles. Dr. Robert A. Vogel, Ph.D. This course focuses on the foundational principles of the grammatico-historical method of biblical interpretation. DVD-ROM format. 2 credits or 2 Learning Units.

DBS 506YE – Interpretation Methods. Dr. Robert A. Vogel, Ph.D. This course focuses on the application of interpretive procedures in Bible study using the English Bible. Pre-requisite DBS 506XE or its equivalent. DVD-ROM format. 2 credits or 2 Learning Units.

DBS 516E – Survey of Learning to Interpret Scripture. (M.A. in Counseling & M.A. in Intercultural Studies students only.) Dr. Robert A. Vogel, Ph.D. In this course you will study the foundational principles and interpretive procedures of the grammatico-historical method of biblical interpretation. You will also apply these principles and procedures in actual Bible study. Required for M.A. in Counseling and M.A. in Intercultural Studies students only; other degree students enroll in DBS 506. DVD-ROM format. 2 credits.

BIBLICAL LITERATURE

BLS 501E – Interpreting Genesis to Song of Solomon. J. Carl Laney, Th.D.

This initial course in biblical literature lays a foundation for the further study of the Bible by introducing the biblical covenants and God's kingdom program. Our examination of the Pentateuch will focus on the great attributes of God. The historical books will show how God works among His people. We will conclude with a consideration of the practical lessons found in the Wisdom Books and Psalms. Recommended pre- or co-requisite: DBS 506. DVD-ROM format. 4 credits or 4 Learning Units.

BLS 501XE – Interpreting the Old Testament I: Genesis - 2 Samuel. J.

Carl Laney, Th.D. This initial course in biblical literature lays a foundation for the further study of the Bible by introducing the biblical covenants and God's kingdom program. Our examination of the Pentateuch will focus on the great attributes of God. The historical books will show how God works among His people. Recommended pre- or co-requisite: DBS 506. DVD-ROM format. 2 credits or 2 Learning Units.

BLS 501YE – Interpreting the Old Testament II: 1 Kings Through Song of Solomon. J. Carl Laney, Th.D. This course continues our study of God's work among the Israelite people, as related in the historical books. Our focus then shifts to a consideration of the practical lessons found in the Wisdom Books and Psalms. Recommended pre- or co-requisite: DBS 506. DVD-ROM format. 2 credits or 2 Learning Units.

BLS 502E – Interpreting the Prophets and Gospels. J. Carl Laney, Th.D. In this course you will learn the historical background of each of the prophets and become acquainted with their distinctive contribution and modern relevance. After examining the prophecies concerning the Messiah, you will see how they are fulfilled in Jesus Christ. Our focus in the Gospels will be on Matthew and John. You will study Jesus' teachings, miracles, and parables with consideration given to present day application. Recommended pre- or co-requisite: DBS 506. DVD-ROM format. 4 credits or 4 Learning Units.

BLS 502XE – Interpreting the Old Testament III: The Prophets. J. Carl Laney, Th.D. In this course you will learn the historical background of each of the prophets and become acquainted with their distinctive contribution and modern relevance. You will examine the prophecies concerning the Messiah, with a view to how they are fulfilled in the person of Jesus Christ. Recommended pre- or co-requisite: DBS 506. DVD-ROM format. 2 credits or 2 Learning Units.

BLS 502YE – Interpreting the New Testament I: The Gospels. J. Carl Laney, Th.D. In this course we will focus on the books of Matthew and John. We will see how Jesus fulfilled Old Testament prophecies, and will explore his teachings, miracles and parables. Special attention will be given to present day application of the Gospels. Recommended pre- or co-requisite: DBS 506. DVD-ROM format. 2 credits or 2 Learning Units.

BLS 503E – Interpreting Acts to Revelation. J. Carl Laney, Th.D. Our focus in the early part of the course will be on the beginnings of the church. As we trace Paul's life, we will study his letters in the order in which they were written, giving attention to the historical and cultural settings. Special focus will be given to Paul's great teachings on salvation, justification, and sanctification. Our attention will then turn to the subject of eschatology as we examine the General Epistles and Revelation. Recommended pre- or co-requisite: DBS 506. DVD-ROM format. 4 credits or 4 Learning Units.

BLS 503XE – Interpreting the New Testament II: Epistles 1. J. Carl Laney, Th.D. Our focus in this course will be on the beginnings of the church. As we trace Paul's life through the book of Acts, we will study his letters in the order in which they were written, giving attention to the historical and cultural settings. Special focus will be given to Paul's great teachings on salvation, justification and sanctification. Recommended pre- or co-requisite: DBS 506. DVD-ROM format. 2 credits or 2 Learning Units.

BLS 503YE – Interpreting the New Testament III: Epistles 2. J. Carl Laney, Th.D. This final course in our biblical literature survey covers the epistles written in the latter part of the apostolic period. These include Paul's prison and pastoral epistles, the general epistles, and the book of Revelation. As we study these books, our focus will be on eschatology and the practical implications this material should have on our daily lives. Recommended pre- or co-requisite: DBS 506. DVD-ROM format. 2 credits or 2 Learning Units.

BLS 511E – Survey of Genesis to Song of Solomon. (M.A. in Counseling students only.) J. Carl Laney, Th.D. This initial course in biblical literature lays a foundation for the further study of the Bible by introducing the biblical covenants and God's kingdom program. Our examination of the Pentateuch will focus on the great attributes of God. The historical books will show how God works among His people. We will conclude with a consideration of the practical lessons found in the Wisdom Books and Psalms. Required for M.A. in Counseling students only; other degree students enroll in BLS 501. Recommended pre- or co-requisite: DBS516. DVD-ROM format. 2 credits.

BLS 512E – Survey of Prophets and Gospels. (M.A. in Counseling students only.) J. Carl Laney, Th.D. In this course you will learn the historical background of each of the prophets and become acquainted with their distinctive contribution and modern relevance. After examining the prophecies concerning the Messiah, you will see how they are fulfilled in Jesus Christ. Our focus in the Gospels will be on Matthew and John. You will study Jesus' teachings, miracles, and parables with consideration given to present day application. Required for M.A. in Counseling students only; other degree students enroll in BLS 502. Recommended pre- or co-requisite: DBS516. DVD-ROM format. 2 credits.

BLS 513E – Survey of Acts to Revelation. (M.A. in Counseling students only.) J. Carl Laney, Th.D. Our focus in the early part of the course will be on the beginnings of the church. As we trace Paul's life, we will study his letters in the order in which they were written, giving attention to the historical and cultural settings. Special focus will be given to Paul's great teachings on salvation, justification, and sanctification. Our attention will then turn to the subject of eschatology as we examine the General Epistles and Revelation. Required for M.A. in Counseling students only; other degree students enroll in BLS 503. Recommended pre- or co-requisite: DBS 516. DVD-ROM format. 2 credits.

IOT 505E – The Book of Psalms. Bruce Waltke, Th.D., Ph.D. An introduction to the Book of Psalms, with emphasis on the principles involved in the exegesis of the hymnic literature. Special attention is given to the various forms of the Psalms, their setting within the historical experience of Israel, and their application today within the church. Audio format. 2 credits or 2 Learning Units.

IOT 506E – Understanding the Old Testament. Bruce Waltke, Th.D., Ph.D. A survey of the history of salvation in the Old Testament, especially as it relates to the central theme of Old Testament theology — the rule of God or the establishment of God's kingdom upon the earth. Audio format. 2 credits or 2 Learning Units.

IOT 507E – The Book of Proverbs. Bruce Waltke, Th.D., Ph.D. An exegetical study of the Book of Proverbs, in its cultural, historical and literary setting with attention to its critical problems. Audio format. 2 credits or 2 Learning Units.

IOT 509E – The Christian and Old Testament Theology. Walter Kaiser, Jr., Ph.D. This study identifies the focal point for the theology of both the Old and New Testaments. It also deals with the amount of continuity and discontinuity between the Old and New Testaments. Audio format. 2 credits or 2 Learning Units.

IOT 510E – The Book of Isaiah. Allen P. Ross, Ph.D. An exegetical study of the Book of Isaiah. This course will not only survey the contents of the book, but also seek to develop the understanding and the skill of exegetical exposition. Audio format. 2 credits or 2 Learning Units.

INT 501E – The Sermon on the Mount. John Stott, D.D. This course presents the consecutive exposition of Jesus' Sermon on the Mount in Matthew, chapters 5-7. Focus is placed upon the practical and spiritual application of the Sermon on the Mount and upon the theological issues and historical interpretations of that passage. Audio format. 2 credits or 1 Learning Unit.

INT 502E – The Pastoral Epistles. John Stott, D.D. An expository and exegetical study of I and II Timothy and Titus, with emphasis on their exegetical and interpretative problems. Their theology and practical relevance for society and the church, especially church leadership, is explored. Audio format. 2 credits or 2 Learning Units.

INT 503E – The Epistles to the Romans. Harold Hoehner, Th.D., Ph.D. An exegetical-theological study of Paul's Epistle to the Romans in the Greek text. Special emphasis is given to the theological themes and overall argument of the epistle. This course assumes a basic skill in Greek exegesis. Audio format. 2 credits or 2 Learning Units.

INT 505E – The Parables of Jesus. Craig L. Blomberg, Ph.D. Methods of interpreting Jesus' parables are surveyed and conclusions are drawn concerning the theology and significance of this portion of Jesus' teaching. Audio format. 2 credits or 2 Learning Units.

INT 506E – The Gospel of Luke. Darrell L. Bock, Ph.D. An examination of the Gospel of Luke with concentration on its message and on preparation of narrative material for preaching and teaching. Audio format. 2 credits or 2 Learning Units.

INT 507E – The Acts of the Apostles. Darrell L. Bock, Ph.D. An exegetical examination of Acts with concentration on the biblical theology of the book, the historical background of events, and the theological emphasis of the speeches. Special attention is given to the relationship between the church and Israel in the early church era. Audio format. 2 credits or 2 Learning Units.

INT 510E – Hebrews. Dennis E. Johnson, Ph.D. This course focuses on the key interpretive issues and theological contributions found in book of Hebrews. The goal of the course is to strengthen students' confidence in the superiority of Jesus and the New Covenant, and to equip him/her to "encourage one another daily." Audio format. 2 credits or 2 Learning Units.

NEW TESTAMENT LANGUAGE AND LITERATURE

NTS 508E – Introducing the Foundation of Greek Exegesis. William D. Mounce, Ph.D. Recognizing the importance of using the original language for the interpretation of the New Testament, you will acquire a thorough foundation in biblical Greek. You will learn the essentials of grammar and an adequate vocabulary by doing exercises, by reading 1 John, and by the use of appropriate language and computer tools. Audio format. 3 credits. (Note, NTS 508-509 are designed to be taken in sequence.)

NTS 509E – Greek Reading and Syntax: Building on the Base for Exegesis. Marc Cortez, Ph.D. Building upon the foundation of grammar and vocabulary, you will read substantial portions of theologically significant passages in all genres of the literature of the New Testament in order to discover the value of the Greek New Testament for theological thinking and Christian living. To these passages you will apply the essentials of Greek syntax with a view to gaining an ability to think syntactically when reading the text and for solving significant doctrinal issues practical to spiritual life and ministry. Prerequisite: NTS 508. DVD-ROM format. 3 credits.

HEBREW SCRIPTURE (OTS)

OTS 508E – Introducing the Foundation of Hebrew Exegesis. Jan Verbruggen, Ph.D. In this class, you will acquire a good foundation of Biblical Hebrew. You will learn the basic grammar up to the strong verb. You will be introduced to the fundamentals of basic Hebrew syntax. You will further sharpen your Hebrew skills by doing exercises, by reading the book of Ruth, by memorizing some basic vocabulary, and by the use of appropriate Hebrew language tools. \$60 lab fee. DVD-ROM format. 3 credits or 3 Learning Units.

OTS 509E – Hebrew Reading and Syntax: Building on the Base for Exegesis. A short systematic review and presentation of the grammar and syntax will be given, and then, building on the foundation of grammar and vocabulary, the grammar of the weak verb is covered. This knowledge will be further strengthened by reading the book of Jonah, and other various selected passages, with special attention to different points of syntax. An in-depth instruction is given in the use of various computer tools, which will help us in our quest for the meaning of the text. \$60 lab fee. Prerequisite: OTS 508E or equivalent. DVD-ROM format. 3 credits or 3 Learning Units.

HISTORICAL THEOLOGY

CHS 505E – Wisdom from Church History. In this course we will learn from the history of the Church from Pentecost to the present. We will focus on (1) the Church's people who, as saints and sinners, have been the flesh and blood of its history; (2) the Church's doctrine which has developed throughout its history; (3) the Church's writings which have exerted a tremendous impact on its history; and (4) the Church's movements which have composed the ebb and flow, the progress and regress, of its history. We will also consider what the past can contribute to the present, seeking to learn lessons from the history of the Church for our own lives, ministries, doctrines, and churches. 4 credits.

CHS 505XE – Wisdom from Church History Part I. This course highlights the historical and theological development of the people of God during the Early and Medieval centuries. The Protestant Reformation is treated biographically and theologically featuring the personalities of Luther, Zwingli, Calvin, Arminius and Wesley. Text-based format. 2 credits.

CHS 505YE – Wisdom from Church History Part II. Beginning with the Post-Reformation era in Europe, this course traces the development of the European church through the era of Protestant Scholasticism, the challenges of the Enlightenment, and the birth and development of classic liberalism and Neo-orthodoxy. Attention is then focused upon the planting of the church in the American colonies, the rise of Deism, the Second Great Awakening, the Finney revivals, the spread of denominationalism, the Holiness movement, the rise of American liberalism, the social gospel, fundamentalism, Pentecostalism and evangelicalism. Text-based format. 2 credits.

CHS 506E – Insight and Inspiration from Church History. In this course we will learn from the history of the Church from Pentecost to the present. We will focus on: (1) the Church's people who, as saints and sinners, have been the flesh and blood of its history; (2) the Church's doctrine which has developed throughout its history; (3) the Church's writings which have exerted a tremendous impact on its history; and (4) the Church's movements which have composed the ebb and flow, the progress and regress, of its history. We will also consider what the past can contribute to the present, seeking to learn lessons from the history of the Church for our own lives, ministries, doctrines, and churches. 2 credits.

ICH 502E – Reformation Church History. W. Robert Godfrey, Ph.D. In this course, learners trace the historic development of the Protestant Reformation from its sixteenth century background to its impact on the world and church today. The goal of the course is to apply the Reformation battle cries of faith alone, grace alone, and Christ alone to life and ministry. Audio format. 2 credits or 2 Learning Units.

ICH 503E – The History of Christianity in America. John Hannah, Th.D., Ph.D. A study of Protestant churches in America from colonial beginnings to the present with emphasis on the numerous influences that have forged the current religious scene. Audio format. 2 credits or 2 Learning Units.

ICH 504E – The Theology of Jonathan Edwards. John Gerstner, Ph.D. An examination of the theology of Jonathan Edwards in detail. Taking a topical approach, the course covers Edwards' teaching regarding all the major points of systematic theology with particular emphasis on Edwards' unique theological contributions. Audio format. 2 credits or 2 Learning Units.

ICH 509E – The Theology of Martin Luther. Robert Kolb, Ph.D. This course surveys the background and setting of Luther's thought as well as his teaching on the range of topics which form Christian theology. It focuses on Luther's doctrines of sin and grace, justification and faith, law and gospel, as well as on his understanding of Christian daily living in the midst of God's callings within the world. Audio format. 2 credits or 2 Learning Units.

ICH 511E – Augustine and Medieval Theology. Scott T. Carroll, Ph.D. In this course, learners study a comprehensive introduction to St. Augustine: his life, his works, and his legacy in the medieval church. Surveying Augustine's life as a pastor, teacher and writer, students are encouraged to evaluate his contribution to medieval theology and to apply those contributions to their own lives and ministries. Audio format. 2 credits or 2 Learning Units.

SPIRITUAL FORMATION

SFS 504E – Growing into Ethical Maturity. Todd Miles, Ph.D. The ability to discern right from wrong—and to act appropriately in light of that assessment—is essential if church leaders are to maintain and model ethical integrity. Your moral sensitivity will be enhanced as you become acquainted with some of the fundamental issues involved in developing a biblically-informed personal, professional, and social ethic. DVD-ROM format. 2 credits or 2 Learning Units.

SFS 514E – Growing into Ethical Maturity. Todd Miles, Ph.D. (M.A. in Counseling students only.) The ability to discern right from wrong—and to act appropriately in light of that assessment—is essential if church leaders are to maintain and model ethical integrity. Your moral sensitivity will be enhanced as you become acquainted with some of the fundamental issues involved in developing a biblically-informed personal, professional, and social ethic. Required for M.A. in Counseling students only; other degree students enroll in SFS 504. DVD-ROM format. 1 credit.

SYSTEMATIC AND BIBLICAL THEOLOGY

THS 501E – Knowing the Triune God: Theology I. Gerry Breshears, Ph.D. You will begin to cultivate your ability to think theologically by exploring how theology is done in various approaches in order to develop a practical theological method. Then you will probe God's progressive revelation focusing on the nature and authority of Scripture before pondering God's triune nature and work culminating in the incarnation of the Son. Your passion for carrying out God's mission in the world will expand as you begin to understand how the Father's revelation has impacted the world He created. DVD-ROM format. 4 credits or 4 Learning Units.

THS 501XE – Knowing the Triune God: Theology 1, part 1. Gerry Breshears, Ph.D. You will begin to cultivate your ability to think theologically by exploring how theology is done in various approaches in order to develop a practical theological method. Then you will probe God's progressive revelation focusing on the nature and authority of Scripture before pondering God's triune nature. DVD-ROM format. 2 credits or 2 Learning Units.

THS 501YE – Knowing the Triune God: Theology 1, part 2. Gerry Breshears, Ph.D. You will continue your study of theology with an exploration of God's work in Creation, and a study of the unique nature of Jesus Christ as the unique God-man. Prerequisite: THS501X or its equivalent. DVD-ROM format. 2 credits or 2 Learning Units.

THS 502E – Glorifying the God of our Salvation: Theology 2. Gerry Breshears, Ph.D. Continuing the process of learning to think theologically you will now apply yourself to biblical revelation regarding the Son as the source of life. You will investigate humanity, its dignity as image of God and its depravity as sinful beings, the reality and impact of spiritual beings as backdrop for the atoning work of the Son and its application in the aspects of our salvation. Contemplating the majesty of the Son's work in light of the depth of sin will invigorate our worship and impel our work for His kingdom. Prerequisite: THS501 or THS501E. DVD-ROM format. 4 credits or 4 Learning Units.

THS 502XE – Glorifying the God of our Salvation: Theology 2, part 1. Gerry Breshears, Ph.D. Continuing the process of learning to think theologically you will now apply yourself to biblical revelation regarding the Son as the source of life. You will investigate humanity, its dignity as image of God and its depravity as sinful beings, as well as the reality and impact of spiritual beings. Prerequisite: THS 501. DVD-ROM format. 2 credits or 2 Learning Units.

THS 502YE – Glorifying the God of our Salvation: Theology 2, part 2. Gerry Breshears, Ph.D. Based on your theological study to this point, you will focus in this course on the atoning work of the Son and its application in the aspects of our salvation. Contemplating the majesty of the Son's work in light of the depth of sin will invigorate our worship and impel our work for His kingdom. Prerequisite: THS 501, THS 502X. CD-ROM format. 2 credits or 2 Learning Units.

THS 503E – Living as the Community of the Spirit: Theology 3. Gerry Breshears, Ph.D. You will culminate the process of learning to think theologically by exploring the Spirit's life-giving work. Then you will investigate the church as God's covenant community and instrument of His present working, ending with the consummation of His kingdom program in end time events. Throughout the course the Spirit will transform us as we see our part in His grand work. CD-ROM format. Prerequisite: THS 501. 2 credits or 2 Learning Units.

THS 511E – Knowing the Triune God: Theology 1. Gerry Breshears, Ph.D. You will begin to cultivate your ability to think theologically by exploring how theology is done in various approaches in order to develop a practical theological method. Then you will probe God's progressive revelation focusing on the nature and authority of Scripture before pondering God's triune nature and work culminating in the incarnation of the Son. Your passion for carrying out God's mission in the world will expand as you begin to understand how the Father's revelation has impacted the world He created. DVD-ROM format. 2 credits. (M.A. in Counseling students only.)

THS 512E – Glorifying the God of Our Salvation: Theology 2. Gerry Breshears, Ph.D. Continuing the process of learning to think theologically you will now apply yourself to biblical revelation regarding the Son as the course of life. You will investigate humanity, its dignity as image of God and its depravity as sinful beings, the reality and impact of spiritual beings as backdrop for the atoning work of the Son and its application in the aspects of our salvation. Contemplating the majesty of the Son's work in light of the depth of sin will invigorate our worship and impel our work for His kingdom. DVD-ROM format. Prerequisite: THS 511. 2 credits. (M.A. in Counseling students only.)

THS 513E – Living as the Community of the Spirit: Theology 3. Gerry Breshears, Ph.D. You will culminate the process of learning to think theologically by exploring the Spirit's life-giving work. Then you will investigate the church as God's covenant community and instrument of His present working, ending with the consummation of His kingdom program in end time events. Throughout the course the Spirit will transform us as we see our part in His grand work. DVD-ROM format. Prerequisite: THS 511. 1 credit. (M.A. in Counseling students only.)

THS 561E – Equipping for Spiritual Warfare. Gerry Breshears, Ph.D. Spiritual warfare begins with evangelism and discipleship and goes on to helping people traumatized by involvement with the demonic. Knowing the types and limits of satanic stratagems against Christians and the church is essential in our increasingly pagan society. From a strong biblical and theological foundation, we will develop practical methodologies to help people find freedom from spiritual bondage. DVD ROM format. 2 credits or 2 Learning Units.



THS 565LE – Highlights of 20th Century Theology. Millard Erickson, Ph.D. This course is a brief examination of selected European, North American, and Third World theologians and movements in the twentieth and early twenty-first centuries, with emphasis on the latter part of the period. Each theology will be examined in terms of its presuppositions, major tenets, argumentation, and its strengths and weaknesses. The activities will include readings, expository and critical lectures, class discussion, a term paper, and a final examination. DVD-ROM format. 1 credit or 1 Learning Unit.

IPT 502E – Exploring Approaches to Apologetics. Gordon Lewis, Ph.D. In this course, learners compare biblical, historical, and recent approaches to defending faith in God, Christ, and Scripture. The course emphasizes the apologetics of Peter among Jews in Jerusalem (Acts 2), and Paul among the Gentiles in Athens (Acts 17). It compares the still influential approaches of Augustine and Aquinas, but focuses primarily on the approaches of six apologists who led in the resurgence of evangelicalism during the last half of the twentieth century. DVD-ROM format. 2 credits or 2 Learning Units.

IPT 504E – Christian Worldview. James M. Grier, Th.D. This course examines the nature and function of belief structures, and the value of developing and living a distinctly Christian life. The course develops a Christian worldview from a redemptive history model of Biblical theology, which is then clarified using the philosophical categories of metaphysics, epistemology, and axiology. Learners will gain an understanding of modern and postmodern thought and how to critique them biblically, and are encouraged to develop and apply a Christian worldview to life and ministry. Audio format. 2 credits or 2 Learning Units.

DIVISION OF INTERCULTURAL STUDIES (DIS)

INTERCULTURAL STUDIES

DIS 501E – Communicating Christ in Culture. Donald Smith, Ph.D. Ministry is communication. The content must be known and experienced so the proclamation will have substance and credibility. After learning what we are to communicate, we must learn how to communicate. The course imparts fundamental concepts that will equip the student to communicate across personal and cultural barriers. 2 credits or 2 Learning Units.

DIS 524E – Foundations: Children and Youth at Risk. Nelson Reed & Terri Williams. Many children, especially in the third world, are facing life crisis situations. Their spiritual need is equally as distressing as their physical needs. This course presents an overview of some of the major sources of physical and emotional suffering and danger. It also looks at past and present children at risk ministry strategies using the lens of guiding ministry principles with an emphasis on those ministries that have targeted evangelism and discipleship along with social outreach. DVD-ROM format. 2 credits or 2 Learning Units.

IWM 503E – Urban Mission and Ministry. Roger Greenway, Th.D. This course focuses on ministry in the world's growing cities. The biblical basis for urban ministry is presented and focused on issues such as ministry to the homeless, raising a family in the city, and planting urban churches. Audio format. 2 credits or 2 Learning Units.

DIVISION OF PASTORAL AND CHURCH MINISTRIES

EDUCATIONAL MINISTRY

EMS 505E – Growing Disciples Intentionally. Kenneth Epp, Ph.D. Christ commands His children to “love God, love people and make disciples” (Matt. 22:37-40, 28:16-20). This course will examine the role of the local church and para-church organizations in facilitating, guiding, and nurturing the spiritual growth of believers from infancy through the end of life. The teaching/learning process will be evaluated primarily in terms of intentional growth outcomes in the lives of Christians at all levels of spiritual maturity. DVD-ROM format. 2 credits or 2 Learning Units.

ICE 501E – Church Leadership and Administration. Kenneth Gangel, Ph.D. This course is designed to develop your leadership potential and to give you familiarity with the various elements of the administrative process, including goal setting and achieving, organization, delegation, human relations, group dynamics, supervision, and the training of other leaders. Audio format. 2 credits or 2 Learning Units.

ICE 502E – Interpersonal Communication and Conflict Management. Kenneth O. Gangel, Ph.D., and Samuel Canine, Ph.D. An examination of the process of interpersonal communication and conflict management in human relationships within Christian organizations, with attention given to communication models, self-concept, non-verbal messages, stress and other strategies that will assist the Christian leader in developing interpersonal communication skills and the productive use of conflict. Audio format. 2 credits or 2 Learning Units.

PASTORAL CARE TO WOMEN

PCW 511E – Pastoral Understanding of Women. Beverly Hislop, D.Min. This course fosters an understanding of the issues that impact effective biblical strategies for pastoral care to women. Students discover how the physiological, psychological, cultural and spiritual aspects of a woman affect good pastoral care. Featured is an understanding of seasons and transitions in life cycles against the background of societal role change for women, and the impact of physiological changes, nurturing needs and feminine perspective. Gender and cultural stereotypes are examined, and biblical strategies for developing friendships, mentor/protege relationships, group support and other helps for shepherding women are presented. DVD-ROM format. 2 credits or 2 Learning Units.

PCW 512XE – Women in Pain, Part I. Beverly Hislop, D.Min. Increasing awareness of experiences that cause deep pain in women's lives enables one to offer strategic pastoral care and referral when needed. Issues discussed in this course include lesbianism, eating disorders, sexual abuse, suicide, widowhood, post-abortion syndrome, pornography, domestic violence, and discontent in singleness. Students learn how, from a biblical basis, to help women grieve losses, begin transition to health, and secure professional help when needed. The course features guest speakers with personal experience in dealing with these issues. DVD-ROM format. 2 credits or 2 Learning Units.

PCW 512YE – Women in Pain, Part II. Beverly Hislop, D.Min. Increasing awareness of experiences that cause deep pain in women's lives enables one to offer strategic pastoral care and referral when needed. Issues discussed in this course include infant/child death, religious abuse, addictions, infertility, terminal illness, physical disabilities, homeless women and incarcerated women. Students learn how, from a biblical basis, to help women grieve losses, begin transition to health, and secure professional help when needed. The course features guest speakers with personal experience in dealing with these issues. DVD-ROM format. 2 credits or 2 Learning Units.

PCW 513E – Women in Leadership. Beverly Hislop, D.Min. In this course students explore four essential components of being a Christian woman in leadership: call, character, craft, and competencies. Concerning the call of a woman in leadership, attention is given to understanding and valuing what motivates a person to lead. Students learn how to define and develop Christ-like character and integrity of heart in private and public arenas. The art of leadership is examined, including cycles, styles, and gender issues. The many facets of being a change agent, communicator, and mentor are investigated, and insights are gained from biblical and historical examples of women in leadership. DVD-ROM format. 2 credits or 2 Learning Units.

PCW 514E – Building Relational Ministries to Women. Beverly Hislop, D.Min. Students learn how to build, maintain and advance - from vision to reality - relational ministries for women featuring four components: cast the vision, build the team, discern the needs, and mold the ministry. The focus is on relational components, such as building and strengthening a leadership team, accurately discerning the needs of individual women and molding ministry around that unique profile while developing spiritual friendships and mentoring relationships. Students will learn how to enhance ministry effectiveness by reflecting a relational emphasis in promotion, evaluation, and celebration. DVD-ROM format. 2 credits or 2 Learning Units.

PCW 522E – Women and Spiritual Warfare: Championing Women to Stand Firm in the Face of Adversity. Kerri Kenyon, M.A. This course will help students identify the strongholds that affect women mentally, emotionally, physically, and spiritually today. Students will gain practical biblical insights to guide women out of confusion, emptiness, or torment and into the fullness of who they were created to be. Spiritual warfare tactics and the ability to combat spiritual warfare with biblical truth will also be taught. Glean the biblical disciplines that release women from bondage into the freedom of their true identity, overwhelming victory, and joy-filled life in Jesus Christ. DVD-ROM format. 2 credits or 2 Learning Units.

PASTORAL MINISTRY

DMS 501E – Thinking Theologically about Ministry. John Johnson, Ph.D. Ministry is built upon sound biblical, theological and cultural foundations. Each generation of the Church must understand and build on these foundations, as well as discover relevant contemporary innovations and applications. This course intends to help you integrate an understanding of the Word and the world with the development of a personal philosophy of ministry. DVD-ROM format. 2 credits or 2 Learning Units.

DMS 502E – Introducing the Theology and the Practice of Worship. John Johnson, Ph.D. The biblical concept of worship and the appropriate utilization of music in its public forms. Identifies the conditions, qualities, and ingredients that most enhance the integrity and meaningfulness of public worship. DVD-ROM format. 2 credits or 2 Learning Units.

DMS 506E – Developing Godly Leadership for the 21st Century. John Johnson, Ph.D. A core leadership course designed for those who intend to be future leaders for the church. This course will move from definitions to the core values of a leader; how to take ministry through a vision process, engage in strategic planning, decision-making, and implementation, build great teams, work through conflict and change, delegate tasks, and effectively mentor the next generation of leaders. Models from the corporate, political, and military worlds will be compared and contrasted with the biblical definitions and illustrations of leadership. DVD-ROM format. 2 credits or 2 Learning Units.

PTS 505E – Providing Effective Leadership in the Local Church. John Johnson, Ph.D. This course builds on the principles of DMS 506 and applies them to the local church. The aim is to prepare pastors to be the leaders God intends for His church. Specific issues treated include pastoral self-leadership; building a leadership team; creating a healthy staff-board relationship; leading a congregation through change, crises and conflict, and the dynamics that come with growth; effective management of resources, from volunteers to staff development to budgeting and expenditures; and leading the church into the future. DVD-ROM format. 2 credits or 2 Learning Units.

PTS 506E – Providing Pastoral Care. John Johnson, Ph.D. This course will equip you to shepherd the church. A philosophy of pastoral care and the skills required for the practical application of this philosophy will be addressed. The role of the shepherd will be examined, as well as the spiritual foundations for pastoral care. The duties that come with shepherding will be taught, including the conducting of ordinances, weddings and funerals. The essentials of pastoral counseling, visitation, care to the dying, and congregational accountability will be covered. DVD-ROM format. 2 credits or 2 Learning Units.

PTS 508E – Developing Strong Families. Gary Thomas, D.D. The divine design for marriage and family roles and responsibilities is explored in order that the Christian leader may reflect and model godliness in these important relationships. Attention is given to improving both one's own faithfulness and equipping one to provide counsel and spiritual nurture in such areas as pre-marital and marital counseling and parenting. DVD-ROM format. 2 credits or 2 Learning Units.

PTS 510E – Preparing and Preaching Expository Sermons. Art Azurdia, D.Min. In this course you will learn how to organize and develop life-changing sermons based upon and bounded by careful biblical interpretation. You will also learn how to communicate the relevance of the biblical message to your contemporary audience, and to deliver that message in a natural and effective manner. Prerequisite: DBS 506. 2 hours. DVD-ROM format. 2 credits or 2 Learning Units.

PTS 541E – Pastoral Leadership in the Small Church. Glenn Daman, D.Min. This course provides the background for developing and revitalizing the overall ministry of the small church. The focus is upon how the unique cultural and organizational distinctives of the small church affect each of the key areas of ministry effectiveness. DVD-ROM format. 2 credits or 2 Learning Units.



PTS 542E – Pastoral Practices in the Small Church. Glenn Daman, D.Min. This course explores the various issues that will confront the pastor within the context of the small church. The course covers a number of different topics that are related to effectively dealing with the daily functions and problems that confront those who pastor in the small church. Special attention is given to the nature of the small church and how the pastor can deal with the various problems faced on a daily basis. DVD-ROM format. 2 credits or 2 Learning Units.

YOUTH MINISTRY

YMS 502E – Developing a Theological Model for 21st Century Youth Ministry. Ron Marrs, Th.M. The historical, philosophical, and theological underpinnings of youth ministry will first be introduced. Then popular models of contemporary youth ministry (both congregational and para-congregational) will be described and evaluated. On-line format. 2 credits or 2 Learning Units.

YMS 503E – Managing Youth Ministry. Ron Marrs, Th.M. Specific competencies for leadership and management of youth ministry will be imparted, including the tasks of organizing, equipping, training, program assessment, staff relationships and personnel evaluation. Specific emphasis will be given to developing a growing and multiplying ministry. On-line format. 2 credits or 2 Learning Units.

YMS 506E – Spiritual Formation of Youth. Ron Marrs, Th.M. You will gain insight into effective nurturing of an adolescent's spiritual life through mentoring, spiritual direction, discipleship, and shepherding. You will also gain greater insight into the emergence of adolescent spiritual maturity. On-line format. 1 credit or 1 Learning Unit.

** A Learning Unit is Western Seminary's measurement of non-credit participation in a course. One LU is equivalent to 15 hours of classroom time. Continuing Education Units, or CEUs, are required by some professional organizations to measure ongoing learning performed by their members. The Center for Lifelong Learning offers CEUs to members of these groups; please contact the CLL office for details.*